



**Norwich
Theatre
Royal**

Technical Specifications

Updated 26.05.26



Norwich Theatre Royal
Theatre Street
Norwich,
Norfolk.
NR2 1RL.

t. 01603 598500

www.norwichtheatre.org

Table of Contents

Contacts	3	<i>Comms.</i>	<i>13</i>
<i>Production Staff.....</i>	<i>3</i>	<i>Touring Mixer.....</i>	<i>13</i>
<i>Other Contacts.....</i>	<i>3</i>	<i>Electronic Architecture</i>	<i>13</i>
General Information	3	VIDEO.....	13
<i>Building / Auditorium.....</i>	<i>3</i>	<i>Video Tie Lines.....</i>	<i>13</i>
<i>How to find us</i>	<i>4</i>	<i>Stage Picture</i>	<i>14</i>
<i>Directions.....</i>	<i>4</i>	<i>Cameras</i>	<i>14</i>
<i>Public Transport.....</i>	<i>4</i>	<i>Live Streaming/ Recording</i>	<i>14</i>
<i>Passenger Vehicles.....</i>	<i>4</i>	<i>Projectors / LED Screen</i>	<i>14</i>
<i>Tour Bus.....</i>	<i>4</i>	LOOSE EQUIPMENT LIST.	14
<i>Delivery Vehicles.....</i>	<i>4</i>	<i>Lighting Equipment</i>	<i>14</i>
<i>Layover Parking</i>	<i>4</i>	<i>Audio and Video Equipment</i>	<i>15</i>
<i>Stage Door</i>	<i>5</i>	<i>Stage Equipment</i>	<i>15</i>
<i>Green Room</i>	<i>5</i>	HEALTH and SAFETY	16
<i>Drinking Water</i>	<i>5</i>	<i>Policy:.....</i>	<i>16</i>
<i>Backstage Catering</i>	<i>5</i>	<i>C.D.M:</i>	<i>16</i>
<i>Dressing Rooms</i>	<i>5</i>	<i>Paperwork:.....</i>	<i>16</i>
<i>Wardrobe</i>	<i>5</i>	<i>Smoking on Stage:.....</i>	<i>16</i>
<i>Towels.....</i>	<i>6</i>	<i>Fire Safety:</i>	<i>16</i>
<i>Keys</i>	<i>6</i>	<i>Working Areas:.....</i>	<i>16</i>
<i>Sustainability</i>	<i>6</i>	Access Facilities	16
PRODUCTION EQUIPMENT.....	7	<i>Stage Access:.....</i>	<i>16</i>
STAGE	7	<i>Signed Performances:.....</i>	<i>16</i>
<i>Get In Access.....</i>	<i>7</i>	<i>Audio Described Performances.....</i>	<i>17</i>
<i>Stage Access</i>	<i>7</i>	<i>Captioned Performances</i>	<i>17</i>
<i>Stage.....</i>	<i>7</i>	<i>Hearing Assistance</i>	<i>17</i>
<i>Dimensions</i>	<i>7</i>	Plans and Hanging Plot	18
<i>Flying System</i>	<i>7</i>	<i>Ground Plan</i>	<i>18</i>
<i>Chain Hoists and Truss.....</i>	<i>7</i>	<i>Section.....</i>	<i>19</i>
<i>Soft Goods</i>	<i>8</i>	<i>Seating Plan</i>	<i>21</i>
<i>Masking</i>	<i>8</i>	<i>Hanging Plot.....</i>	<i>22</i>
<i>Prompt Corner</i>	<i>8</i>		
<i>Access Eqpt.</i>	<i>8</i>		
<i>Auditorium Treads</i>	<i>8</i>		
<i>Rostra</i>	<i>8</i>		
<i>Piano / Keyboard</i>	<i>8</i>		
<i>Orchestra Pit.....</i>	<i>8</i>		
LIGHTING	10		
<i>Lighting Desk</i>	<i>10</i>		
<i>Racks.....</i>	<i>10</i>		
<i>D.M.X. and Ethernet</i>	<i>10</i>		
<i>Follow Spots.....</i>	<i>10</i>		
<i>Colour & Gobos.....</i>	<i>10</i>		
<i>Dimensions</i>	<i>10</i>		
<i>Power.....</i>	<i>11</i>		
<i>Sound Power.....</i>	<i>11</i>		
<i>Pros Booms (Slots)</i>	<i>11</i>		
<i>Control Position</i>	<i>11</i>		
SOUND	11		
<i>Desk</i>	<i>11</i>		
<i>Playback</i>	<i>11</i>		
<i>FOH Speakers.....</i>	<i>12</i>		
<i>Speaker Tie Lines</i>	<i>12</i>		
<i>Cable Mics</i>	<i>12</i>		
<i>IEM/Monitors</i>	<i>12</i>		
<i>Wireless Licences</i>	<i>12</i>		

Contacts

Production Staff

Production and Buildings Director Will Hill 01603 598550
will.hill@norwichtheatre.org

Assistant Director Dec Matwij 01603 598527
Production & Technical Services dec.matwij@norwichtheatre.org

Head of Stage Mark Bobbitt 01603 598500
mark.bobbitt@norwichtheatre.org

Head of Lighting, Sound & AV Darren Male 01603 598500
darren.male@norwichtheatre.org

Lead Technician (Stage) Emma Maxwell
Lead Technician (Lighting, Sound & AV) Kyle Fuller

firstname.surname@norwichtheatre.org or technical@norwichtheatre.org

Other Contacts

Visitor Services Manager James MacDonald 01603 598578
(New name for F.O.H.!!) visitorservices@norwichtheatre.org

Visitor Services Duty Manager Mobile 07425 459690

Stage Door 01603 598500
visitorservices@norwichtheatre.org

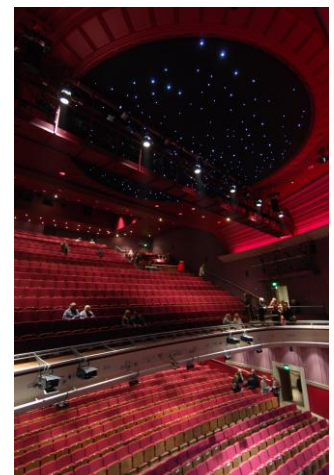
General Information

Building / Auditorium

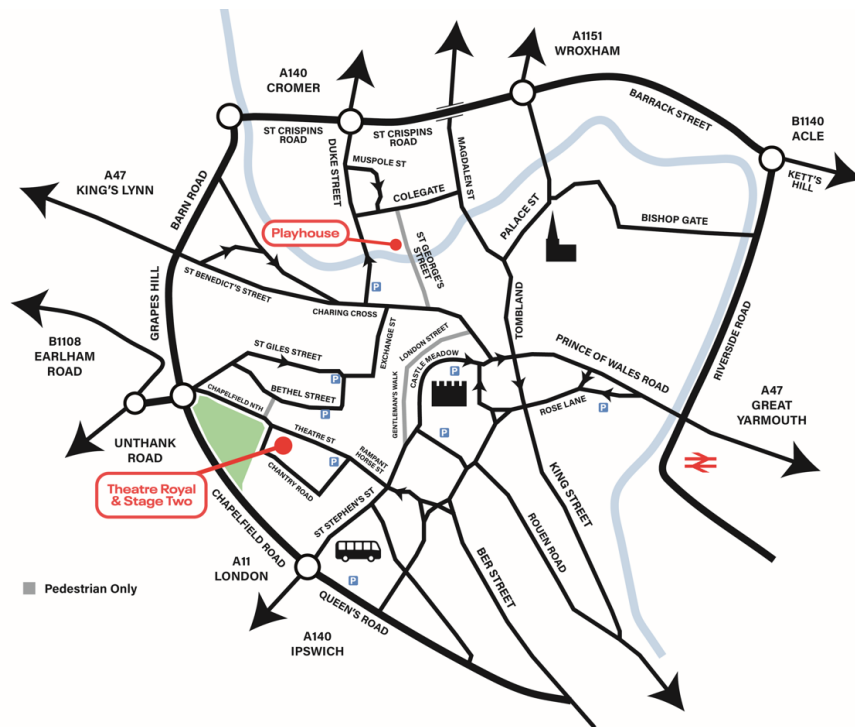
There has been a theatre on the site of the Theatre Royal since 1758. The current building was constructed in 1935. The most recent major refurbishment was completed in October 2007.

The Theatre Royal is Norwich, Norfolk and East Anglia's premier theatre presenting a high-quality mix of comedy, drama, musicals, dance, opera, music and family shows all year round.

The auditorium is arranged on two levels, with a shallow raked stalls (626 seats) and a steeply raked circle (682 seats), giving an audience capacity of 1308.



How to find us . . .



Directions

From the Chapel Field roundabout take Chapel Field North along the side of Chapel Field Park. At the end of the park turn right onto Chapel Field East and then first left at the mini roundabout onto Chantry Road.

Public Transport

Norwich Bus Station is about a 5 minutes walk. <https://www.konectbus.co.uk/>

Norwich Train Station is about 15 minutes walk. <https://www.greateranglia.co.uk/travel-information/station-information/nrw>

Passenger Vehicles

Very limited parking spaces may be available on our side and rear car parks by special arrangement via your Company or Tour Manager or with our Visitor Services Manager or Production & Buildings Director. Vehicles parked without permission may be subject to a penalty charge notice. There are numerous pay and display car parks nearby, a map can be downloaded here:

https://www.norwich.gov.uk/downloads/file/3368/norwich_parking_planner

Tour Bus

Parking only by prior arrangement. Buses must park facing the building. 2x 32amp 3ph/ 2x 16amp 3ph/ 1x 32 single phase/ 3x 16amp single phase are available in unlocked wall mounted cabinet adjacent dock doors. There is a £10 facility fee for usage.

Delivery Vehicles

Scenic deliveries are via the scene dock at the rear of the theatre. The dock doors are at the far end of our rear car park approximately 13m from the road. Parking by arrangement for four 40' trailers for In and Out only. Trailers may be left by arrangement. ///ending.flip.trend

Layover Parking

Layover parking is available at several locations in the city centre:

- King Street NR1 2BU,
- Rouen Road NR1 1QP,
- Lower Clarence Road NR1 1HA
- Harford Park & Ride NR4 6GA.

Stage Door

The Stage Door is located at the rear of the theatre. The position is not permanently manned and has intercom access if unattended. [///affair.haven.clap](http://affair.haven.clap)

Green Room

The Green Room is located immediately adjacent the stage door foyer and is available for the use of all venue and touring staff. There is a large, seated table and side seating, sinks and washing up facilities, fridges, microwaves, cutlery and crockery. Complimentary tea and coffee facilities are also available.

Drinking Water

Potable water is available from the tap in both wardrobe and the green room. All other water supplies backstage are not suitable for drinking. Water coolers can be used but would need to be toured or hired by the production.

Backstage Catering

Where a catering operation is required to be set up backstage the wardrobe area next to Stage Door is usually used as a kitchen area. Please contact us to arrange the necessary power where required.

Dressing Rooms

Floor	Name	Capacity	Facilities						
			WC	Shower	Bath	Phone 01603	Fridge	TV	Wi-Fi
Ground Floor	Centenary Room	2	✓	✓	✓	598650	✓	✓	✓ Cat 5
	1	2	✓	✓		Ext 651	✓	✓	✓
	2	2	✓	✓		Ext 652	✓	✓	✓
First Floor	3	4	✓	✓		Ext 653	✓	✓	✓
	4	4	✓	✓		Ext 654	✓	✓	✓
	5	2	✓	✓		598655	✓	✓	✓ Cat 5
	Ch A	15	✓ x 2	✓ x 2		Ext 661	✓	✓	✓
	Ch B	15	✓ x 2	✓ x 2		Ext 662	✓	✓	✓
	Ch C	9				Ext 663	✓	✓	✓
Second Floor	6	3	✓ adjacent	✓ adjacent		Ext 656	✓	✓	✓
	7	4	✓ adjacent	✓ adjacent		Ext 657	✓	✓	✓
	8	4	✓ adjacent	✓ adjacent		Ext 658	✓	✓	✓
Basement	Band Room 1	6				Ext 664		✓	✓
	Band Room 2	6				Ext 665		✓	✓
	Band Room 3	2	✓ adjacent			598659	✓	✓	✓ Cat 5

Dressing Room No.5, Centenary Room or Band Room 3 are usual options for a Company Office. Dressing Room Plan available by request. A Photocopier is available for reasonable use in our Administration Offices.

Most backstage areas have free WiFi coverage on NTRGuest. Password “footlights”

The TV system carries a full digital system, and the Stage picture.

Wardrobe

At Stage level, direct access from Get In and adjacent to Stage Door. 2 x Miele Stacked industrial Washer/Driers (PW6065/PT7136). Coin Op Washers (£2), Dryers (50p). Plumbing for two touring Washing Machines. TV & Fridge Freezer. An Iron and Ironing Board are available by request.

Towels

Bath or hand Towels can be made available. There will be a contra charge to cover cost of laundering after use.

Keys

Dressing room keys should be collected from and returned to Stage Door. There will be a £25 charge to cover replacement in the event of any losses.

Sustainability

We have waste recycling facilities available on stage and in all backstage areas. Food and batteries can be recycled in the Green Room

PRODUCTION EQUIPMENT

The loose staging, lighting, sound and AV equipment listed below is available for your use as specified in your contract. The standard contract allowance is shown the Loose Equipment List within this document. Any non-contracted equipment requested, specified or required will be charged back to the production via the contra at the rates listed. This equipment is also available for external hire so please check availability before your event.

STAGE

Get In Access

Off road parking at street level. ///ending.flip.trend. Roller Shutter Door leads to Scene Dock. Direct access to Stage Right wing via ramped Mid Dock. We have a 2 x 5m Truck Ramps. Smallest dimension on Get In route is 4300mm height and 2700mm width

Stage Access

The stage is accessible from backstage USL, USR and DSL. There is a pass door to the auditorium DSR.

Stage

The Stage is flat and consists of 6mm oil tempered hardboard on 42mm of birch ply. It is painted Matt Black.

Dimensions

Stage Front to Setting Line	=	1.09m (3'7")
Setting Line to Back Wall	=	11.08m (36'5")
Pros. Width	=	9.68m (31'9")
Pros. Height	=	6.96m (22' 8")
Grid Height	=	18.67m (61'3")
Flying Height	=	18.30m (60')
Dock Doors	=	4.35m w x 4.35m h (14'3"w 14'3"h)
Grid Trap (USL)	=	1175mm x 910mm (3'10" x 3')

Flying System

Operated from a raked platform Stage Left at stage level. 52 bars (5 line) single purchase counterweight at 200mm centres (refer to ground plan for small irregularities downstage). 1 lateral (up and downstage) bar each side. All bars are ladder bars with the exception of the House Tabs bar and the lateral bars. We have approximately 7500kgs of counterweight. Ladder bars all have extensions intended for light loading.

Bar Length	=	13600mm	(44'7")
Bar O.D.	=	48mm	
Bar I.D.	=	36mm	
Cradle Capacity	=	420Kgs	(840Lbs)

Half Rails and Grid

Half Rails both sides accessed by cat ladder. Grid accessed by cat ladder USL. Any touring staff needing grid access must be accompanied by a member of venue staff.

Chain Hoists and Truss

	Advance 1	Advance 2	Overstage
Capacity	2 x 1 tonne Points	2 x 1 tonne Points	2 x 1 tonne motors
Lift Height	12m (39' 6") from Stalls Floor	12m (39' 6") from Stalls Floor	18.67m
Dist. From Stage Front	1300mm	3500mm	Varies
Dist. from Centre	5340mm	4000mm	Varies. One usually on grid trap
Rigging	2 x permanently rigged 1 tonne Liftket Chain Hoists and Prolyte H30V Truss (11.68m length)	2 x permanently rigged 1 tonne GIS Chain Hoists and Thomas 40cm Squarelite Truss (11m length)	1 x 1 tonne STAR Liftket Chain Hoist – Dual Speed 1 x 1 Tonne Loadguard Chain Hoist – Dual Speed
Loading	UDL 1100kgs CPL 500kgs	UDL 1300kgs CPL 670kgs	
Notes	BGV D8+ No Secondary Safety Required	BGV D8+ No Secondary Safety Required	Build Motors

Soft Goods

The House Tabs are Damson velour with a Silver trim. We have in black serge; borders x 8, pairs legs x 6, 1 full tab, 1 pair of half-tabs and 1 cyclorama (White Polytwill), 4 x 7m x 5m ShowLED Chameleon Star Cloths. Other soft goods as listed under Stage Equipment in the Loose Equipment List may also be available. We also have assorted black serge covered masking flats.

Masking

As we are primarily a receiving venue we have no standard overhead masking configuration and as such, although we will endeavor to position masking where a production may require, it may also be necessary to move some upon your arrival either during the scheduled fit-up or pre-rigged before arrival, the staffing for which may well be chargeable.

Prompt Corner

Prompt Desk with cue light system, talk back, paging stage picture and stage infra-red picture on 5 x colour monitors. Facility for MD/Conductor picture also. The prompt desk can be positioned DSL or DSR.

Access Eqpt.

One tallescope: 1 x 50524 max working height 9.5m (31'). Three sets of Zarges: 1 x 9.7m, 1 x 6.9m, 1 x 5.8 m. Various step ladders. 1 Genie GR20, 1 Haulotte Quick Up 12. Access equipment may be used by touring staff with appropriate qualifications.

Auditorium Treads

It is possible to install treads between the auditorium and stage when there is no orchestra pit and subject to there being no sound, lighting or other set preventing their use. These can be installed at the pros. left and right going into the auditorium with handrails or more centrally going across the auditorium. Generally no handrail in the central position due to sightline issues.

Rostra

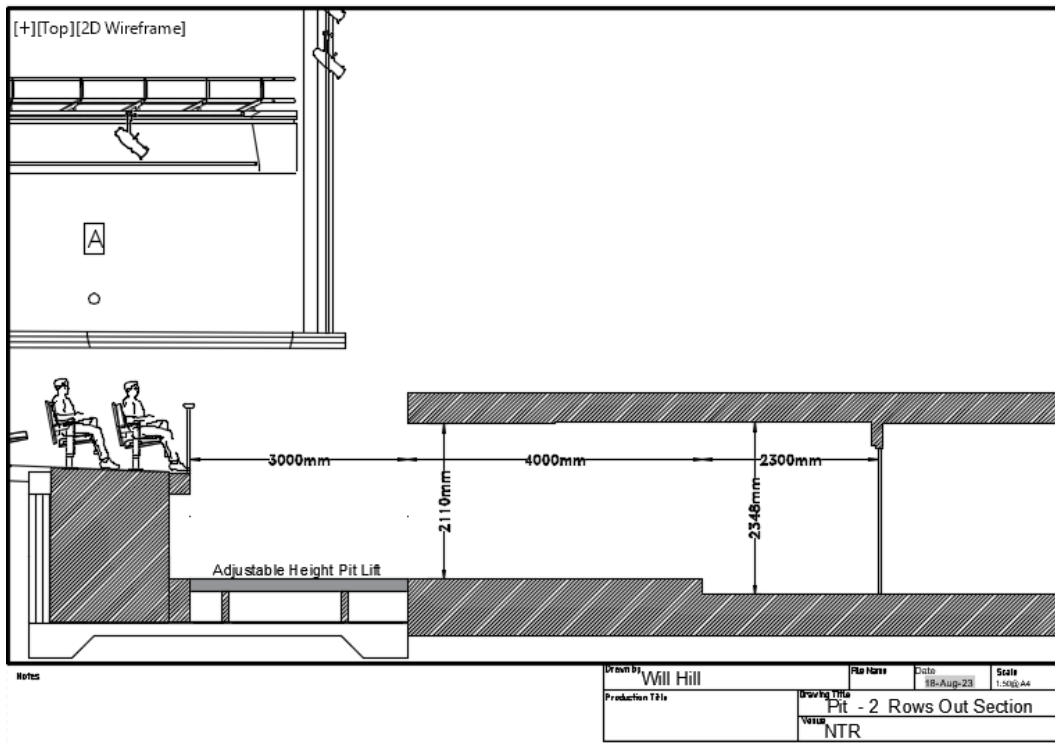
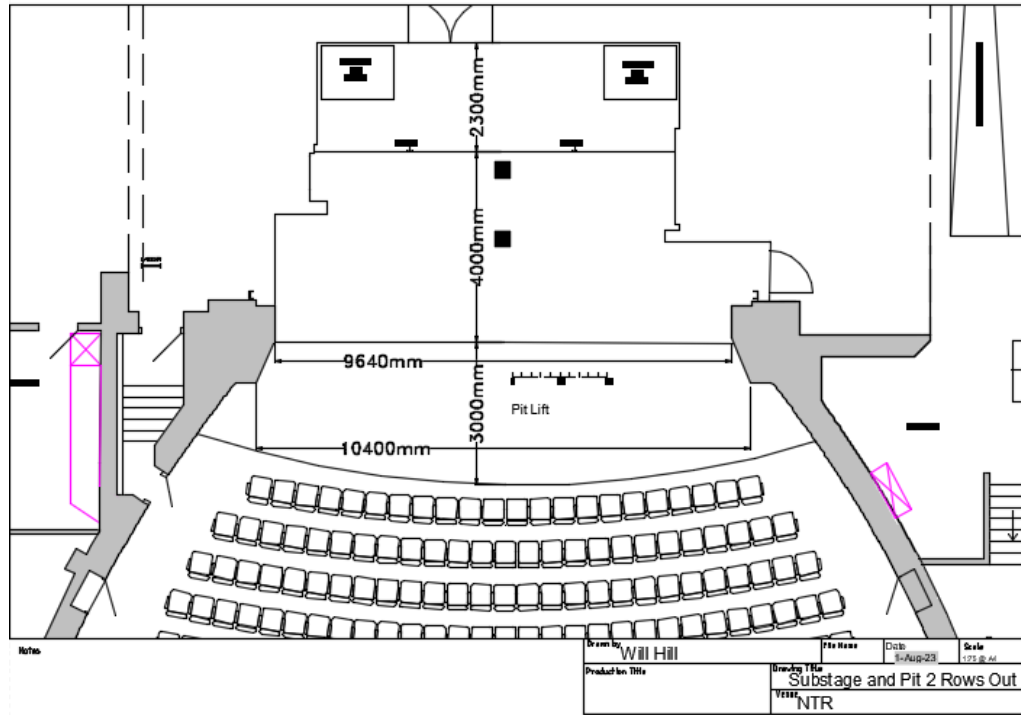
6 pieces of 2440 x 1220, 1 piece of 1220 x 1220 and 2 pieces of 2440 x 610 Litestructures Litedeck and various height legs (280mm, 350mm, 530mm, 710mm). 4 x 8' and 2 x 4' handrails for the Litedeck.

Piano / Keyboard

Kawai Boudoir Grand, Roland RD300SX Keyboard.

Orchestra Pit

The pit can accommodate various sizes of band and orchestra. Plan and Section of the normal "two rows out" shown below. All sizes involve seat removal. If only Row A is removed the Pit will remain at auditorium height with just 300mm of rostra height removed. This layout also has very restrictive access from substage. Contact us for further details if required. We have 44 Opus Posture Orchestra chairs.



LIGHTING

Lighting Desk

ETC Eos TI & ETC Ion, ETC focus remote and WiFi lighting net.

Racks

05 x ETC Sensor Racks, 104 x 15A FOH. 170 x 15A on stage. 18 x 25A on stage.
90 x DMX Operated 10A & 15A Non Dim circuits spread around the Theatre.

D.M.X. and Ethernet

Large network of DMX tie lines spread around the Theatre. In house racks and houselights can be operated from any touring desk using DMX or ETC Ethernet. There are a limited number of scroller tie lines around the building as well.

Cat5 tie lines spread around the Theatre running ETC Net 3 on 3 x 4 way ETC gateways. This infrastructure can be used for touring equipment that requires a Cat5 network. 4 x dedicated Cat 5 tie lines from Stage Right touring rack position to the control rooms.

Follow Spots

There are 3 x Robert Juliat Aramis 2500w HMI Spots positioned in the Spot box at the rear of the circle. There is room and power for four spots in this position. Our normal set up is a spot on each side and one on centre. There is also room for a projector but limited to a 32 amp Single Phase supply. The throw to the front edge of the stage is 29m (95').

Colour & Gobos

We stock most of the Lee and Rosco range of colour. We also have a large stock of Rosco and DHA gobos. We have a large stock of B size gobo holders and Irises for all our profiles.

Dimensions

Circle Front lighting bar to the setting line	10.1m	On Centre
Circle Front lighting bar to back wall of the stage 20.4m	21m	On Centre
Lighting Bridge to Stalls floor	10.56m (34'8")	
Lighting Bridge to front edge of the stage	11.86m (38'10")	
SR Half Rail Lighting bar to stage floor	9.73m	
SL Half Rail Lighting bar to stage floor	8.75m	

Power

Location	Amps	Phases	Notes
SR DS	300A	3 ϕ	Power Lock, selectable RCD
SR DS	63A	3 ϕ	No RCD
SR DS	32A	3 ϕ	30ma RCD
SR DS	32A	1 ϕ	100ma RCD
SR DS	16	1 ϕ	30ma RCD
SR DS	125A	3 ϕ	selectable RCD
SR US	63A	3 ϕ	selectable RCD
SR US	32A	3 ϕ	selectable RCD
SR US	32A	1 ϕ	selectable RCD
SR US	16A	1 ϕ	selectable RCD
SL US	32A	1 ϕ	30ma RCD
SL DS	125A	3 ϕ	selectable RCD
SL DS	63A	3 ϕ	selectable RCD
SL DS	32A	3 ϕ	selectable RCD
SL DS	63A	1 ϕ	selectable RCD
SL DS	32A	1 ϕ	selectable RCD
SL DS	16A	1 ϕ	selectable RCD
SL DS	32A	3 ϕ	30ma RCD
SL DS Perch	32A	3 ϕ	100ma RCD
SL DS Perch	32A	1 ϕ	100ma RCD
SL DS Perch	63A	3 ϕ	No RCD
Scene Dock	2 x 32A	1 ϕ	30ma RCD
Substage	32A	1 ϕ	30ma RCD
Rack Room SL DS	125A	3 ϕ	No RCD

Sound Power

Situated in the DSL props room Variable RCD and fire alarm interface Panel containing 1x 125A-3 ϕ , 1x 63A-3 ϕ , 1x 32A-3 ϕ , 1x 16A-3 ϕ , 1x 63A-1 ϕ , 2x 32A-1 ϕ (4x 16A-1 ϕ , 4x 13A sockets Individual 30ma RCD protected)

Pros Booms (Slots)

1 each side. 6.5m vertical ladder bar rated at 50kgs/m. On top of these are two boom arm rigging positions with WLL's of 100kgs and 250kgs. The 250kg points each have a GIS 250kg chain hoist permanently rigged.

Control Position

See details in Sound section, "Mix Position" below.

SOUND

Desk

120 Channel Yamaha CS-R5 in the control room at the rear of the stalls. A Yamaha CL1 and DM3 digital desks are available for onstage use or as required these.

Playback

Control Room Rack with 1 x Tascam CD Player, 2 x Mac Mini running QLab Pro Sound.

FOH Speakers

No.	Type	Notes
4	d&b 24S/24S-D	2 x 24S on Advance 1' 2 x 24SD)on bottom of pros booms
2	d&b 12 S-D	On Circle Rail for Circle Front /Sides
4	d&b 21s/18s Subs	2x 21s Front of Substage (subs)2x18s fixed on the uppers
6	d&b T10	On Advance 1 Centre
6	d&b 10S	Rear of Lighting Bridge as circle delays
6	d&b E5	Hung from Circle Front as mid stalls delay
6	d&b E5	Hung from Stalls Ceiling as rear stalls delays
4	d&b E4	Hung from Stalls Ceiling as rear stalls delays
6	d&b E5	In the Stage Front Fascia as front fills
8	d&b 5s	Rear circle delays

Additional Speakers / Amps

No.	Type	Notes
4	d&b Max 12	Wedge /Stand mount
2	d&b E12	Stand mount and hanging frames
6/4/4	d&b E8 /E6/44S	Stand mount and hanging frames
8	d&b E3	Stand mount and hanging frames
4	EMS-41	Subject to availability
16	EMS-51	Subject to availability
4	EMS-81	Subject to availability
4	EMS 122w	Subject to availability
2	DQ6-D Amplifiers	Subject to availability
3	Lab Gruppen IPD2400	Subject to availability

Speaker Tie Lines

To four corner positions onstage, either side of orchestra pit, pros. arch (upper and lower), either side of centre auditorium (stalls & circle), either side of auditorium at rear (stalls & circle) and along circle front. Speaker tie lines are accessed from prompt corner and / or substage.

Cable Mics

Make	Type
Shure	6 x SM58 2 x SM57
Sennheiser	1 x ME66/40 Kit 1x ME64/66 3 x e904
AKG	2x P170
Audix	1 x D6
DPA	4x 4097 3x 4098H 2x2011
Crown	4 x pcc 160

Radio Mics.

24x Shure Axient Radio receivers fixed in the venue. 24x body pack transmitters we have a selection of microphones available for them. 4 AD2 handheld transmitters with a selection of Mic Heads There are 2 AD3 plug on transmitters 4x way I Shure ULXD Lav Kit on K51 (ch38) available for use were needed 1x 12 way, 1x4 way Sennheiser EW-D radio mic systems available for external Hire. 1x 2 Sennheiser EW-DX 2-way kit HH/Lav available for external Hire. 1x 12-way Professional Sennheiser Kit EM3732 and SK5212 available for external Hire.

IEM/Monitors

1x Shure PSM9 IEM system
 2x Shure PSM3 IEMs with 2x pocket receivers
 1x Allen&Heath ME-U (Dante) 10x ME-1 personal Monitors

Wireless Licences

A fixed site licence is held to cover the frequencies listed below. We also have a shared ch38 licence.

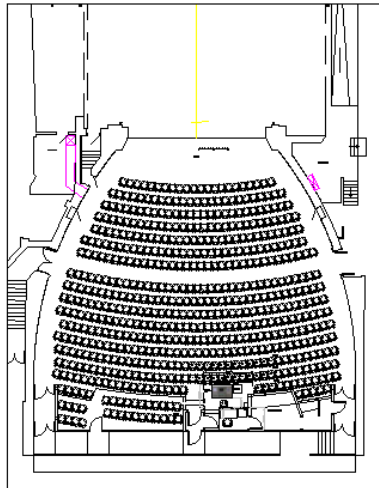
502.700MHz	503.475MHz	503.825Mhz	504.500Mhz	507.750Mhz	508.755Mhz
509.275Mhz	518.050Mhz	518.400Mhz	519.300Mhz	519.825Mhz	520.275Mhz
520.625Mhz	521.075Mhz	521.675Mhz	522.075Mhz	522.600Mhz	522.950Mhz
523.425Mhz	523.975Mhz	524.400Mhz	525.075Mhz	525.450Mhz	525.975Mhz
630.075Mhz	631.050Mhz	633.125Mhz	634.400Mhz	634.800Mhz	635.975Mhz
636.750Mhz	637.350Mhz	656.100Mhz	658.300Mhz	660.075Mhz	661.550Mhz

Comms.

Paging system to all backstage areas including show relay. Paging to FOH. Stage intercom to all positions, provided by 2 channel Clear-com system, with facility for Radio Cans on 1 channel. 8 x HME Radio Cans (Charges apply) running on Channel 1 of wired Comms. We also have a Motorola system with 6 Motorola Radios some of which are available for use by touring companies (Charges apply). These are duplexes with channel one of the Clear-com system.

Touring Mixer

Small and Large positions available. Small position involves no seat removal and is a single operator position at rear stalls adjacent our Lighting Control room. The Large position involves removal of 9 seats. Your preferred position should be specified in your contract. Either position may also accommodate touring lighting desks if required. A multi trap runs to the stage in the floor on the auditorium right (approx. 40m.). In-house tie lines (72), intercom and cue lights available at both positions.



Notes

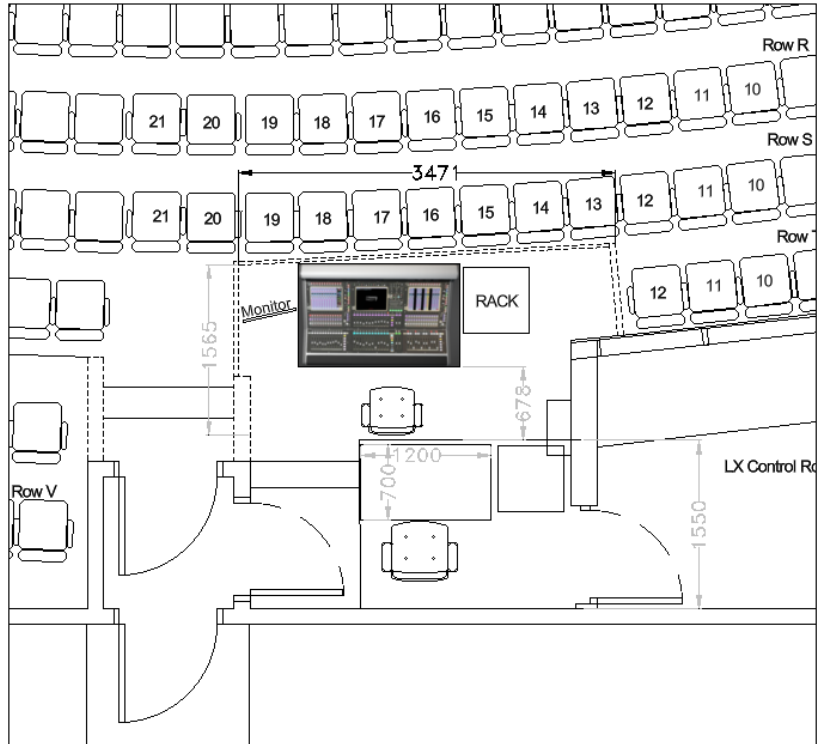
T 13-21 only removed when mixing position needed.

LX can go at rear high level position or next to sound Desk if it will fit.

NTR Sound Desk and rack on wheels can also use high rear position.

Dashed line is low level wall or removable barrier.

Notes



Drawn by:	Will Hall	File Name:	Drawn:	1/18/2010	Scale:	Not to Scale
Produced by:	Will Hall	Drawing Title:	New Mixing Position Plan			
		Version:	NTR			

Electronic Architecture

We have an acoustic enhancement system throughout the auditorium. CARMEN® is an interactive system which allows a hall's acoustics to be adapted to suit each type of presentation (plays, operas, concerts) by modifying the period of reverberation. Its principle involves the creation of active virtual walls, composed of a range of cells combining a microphone and loudspeaker, distributed throughout the hall and its ceiling. The system is available for use as desired.

VIDEO

Video Tie Lines

Available in both wings up and downstage, Pit, Lighting and Sound Control Rooms, circle front and centre stalls (plotting) position. All sources are patchable composite. HDMI tie line from SL to circle front, and SL to LX control.

Stage Picture

Colour picture available in most dressing rooms via television sets, on the prompt desk and on large screen monitors in each wing. Prompt desk, lighting control, sound control and fly rail (stage left wing) monitors can be switched to black & white infra-red aided picture.

Cameras

Permanent Mount Colour & Black / White (Infra-red) cameras on circle. Further Colour Camera also available for pit or stage use. Permanent LED Infra-red light mounted on the Circle Front.

Live Streaming/ Recording

We have full NDI video infrastructure, with 3 x Birddog P200 PTZ cameras. We also have a Blackmagic Television Studio Vision Mixer. We have the ability to either record or live-stream your production.

Projectors / LED Screen

We have 2 x Projectors for hire. We also stock large amounts of LED Screen (DeltaPix 48T) for hire. Price on application.

LOOSE EQUIPMENT LIST.

The prices below are current to the updated date these may be subject to change. If you require anything in addition to the contract allowance shown please contact us to confirm its availability and for an updated costing if required. Visit www.hire.norwichtheatre.org for further kit available. Some of this equipment may be stored off site so additional transport costs may be applied.

The equipment listed below is available for your use as specified in your contract. The standard contract allowance is shown in the relevant column. Any non-contracted equipment requested, specified or required will be charged back to the production via the contra at the rates listed.					
Lighting Equipment	Standard Contract	Stock	Hire Charges (ex V.A.T.)		Updated
			Per Day	Per Week	Notes
Lanterns					
ETC Source Four 750w Fixed Beam	20 FOH 12 Stage	104	£6.00	£12.00	16 x 36", 16 x 50", 30 x 26", 28 x 19", 06 x 70", 6 x 90", 2 x 14". 20 x 19" & 20 x 26" are normally rigged FOH.
ETC Colour-Source LED Profile Fixed Beam		28	£7.00	£14.00	Various Lenses available, 12 = Deep Blue, 16 Standard
ETC Source Four Lustr+ LED Profile		06	£10.00	£20.00	Various Lenses available
Strand Cantata F / PC 1200w.	2 FOH 20 Stage	10	£4.00	£8.00	
Strand Cantata PC 1200w.		40	£4.00	£8.00	
Chauvet Quad Par 18 (Uplighters)	6	8	£4.00	£8.00	
Philips, SL e-STRIP 10		10	£10.00	£20.00	
Thomas Par 64 Can 60, 61, 62. 1000w.	24	150	£3.50	£7.00	
ETC Color-Source LED Pars		46	£6.00	£12.00	18 = Deep Blue, 28 Standard
Thomas Floor Cans 60, 61, 62. 1000w.	4	12	£4.00	£8.00	
Strand Alto Fresnel. 2000w		6	£9.00	£18.00	
Martin Mac Aura XB LED Wash Lights		6	£35.00	£70.00	
Brite Q BT-Orbit LED Wash Lights		16	£25.00	£50.00	
Z19 ADJ Wash Lights		12	£25.00	£50.00	
Stage Wash	1	1	N/A	N/A	
Mac Encore performance Cool White LED		4	£35.00	£70.00	
Ayrton Diabos		8	£40	£80	
Effects					
Look Solutions Viper NT Smoke Machine.		2	£25.00	£50.00	price includes fluids
Jem AF1 DMX Fans.		4	£18.00	£36.00	
Look Solution Unique Haze Machine.		2	£25.00	£50.00	Price includes fluids
Mirror Ball and rotators.		2	£12.00	£24.00	2 x 500mm (20") diameter
UV Cannon		5	£12.00	£24.00	
Equinox Low Foggers		4	£50.00	£100.00	
Accessories					
Lighting Stands (4'6")		8	£1.25	£2.50	
Lighting Stands large		2	£2.00	£4.00	
Lighting Ladders.		8	£6.00	£12.00	
Conductor twin music stand		1	£8.00	£16.00	
Music Stands Rat Type.		14	£4.00	£8.00	
Booms		8	£POA	£POA	

Gobo Holders for ETC Profiles		50	£1.50	£3.00	
Irises for ETC Profiles		16	£4.00	£8.00	
Red Rad (Heaters)		6	£6.00	£12.00	

Audio and Video Equipment	Standard Contract	Stock	Hire Charges (ex V.A.T.)		Updated	26.05.26
			Per Day	Per Week	Notes	
Speakers						
d&b E12/E8/E6 Speakers		2/6/4	£20/£12/£8	£40/£24/£16		
Wedge Speakers	2	4	£8.00	£16.00		
Small Powered Speaker - Yamaha MP55		4	£5.00	£10.00		
Microphones						
Cable Microphones (Dynamic)	6	8	£4.50	£9.00	Details in 'Sound' section	
Cable Microphones (instrument)		Qty	£6.00	£12.00	Details in 'Sound' section	
Radio Mics (standard mic. head)		Qty	£30.00	£60.00	Details in 'Sound' section	
Float Mics		4	£6.00	£12.00	Crown PCC 160/DPA4097	
D.I. Boxes	1	8	£3.50	£7.00		
Mic Stand	6	22	£2.00	£4.00		
Mac Mini (Qlab sound and DVS)		2	£75.00	£75		
Intercom Belt Pack & Headset		8	£4.00	£8.00		
Motorola CP040 16Ch Radio's		6	£10.00	£20.00	Duplex Radio Walkie Talkie system	
Radio Cans		8	£15.00	£30.00	HME System	
AV Equipment						
Panasonic PTRZ12 projector		1	£250	£250	Standard, 0.85, 0.35 and Hanging Frame.	
Panasonic PTRZ 6K projector		1	£150.00	£150.00	Standard, 0.85, 0.35 and Hanging Frame.	
Birdog P200 PTZ Camera		3	£40.00	£100.00	Controller included	
DeltaPix 4.8T LED Screen		1	POA	POA	100 0.5 x 0.5m panels and controller available.	
Circle Monitor	2	2	N/A	N/A		

Stage Equipment	Standard Contract	Stock	Hire Charges (ex V.A.T.)		Updated	26.05.26
			Per Day	Per Week	Notes	
Soft Goods						
Black Serge Borders /Pairs of Legs	5/5	8/6	£10.00	£20.00	Various Sizes	
Black Serge Full Tab	1	1			Each 7.92m Height, 14.5m Width	
Black Serge Half Tabs		1	£20.00	£40.00	Each 7.92m Height, 7m Width	
ShowLED Chameleon Star Cloth Panels		3	£65.00	£130.00	Each 7m Height, 5m Width	
ShowLED Chameleon Star Legs		1 Pair	£45.00	£90.00	Each 7.92m height, 3m Width	
ShowLED Chameleon Star Border		1	£45.00	£90.00	3.5m Height, 13.5m Width	
Cyclorama (White Polytwill)	1	1			8m Height, 13m Width	
Black Gauze		1	£25.00	£50.00	8.5m Height, 15m Width	
Grey Gauze		1	£25.00	£50.00	8.5m Height, 15m Width	
White Gauze		1	£25.00	£50.00	8m Height, 15m Width	
White Filled Cloth		1	£30.00	£60.00	8m Height, 13.5m Width	
Liquid Lame Silver Austrian Festoon Cloth		1	£50.00	£100.00	8m Height, 13.5m Width	
Staging						
Litedeck (2440 x 1220)		6	£10.00	£20.00		

HEALTH and SAFETY

Policy:

The Norwich Theatre Health and Safety Policy are available upon request at Stage Door.

C.D.M:

Should the staging of your production involve any "Construction" work you will need to fulfill your responsibilities under the Construction Design and Management Regulations 2015.

Paperwork:

To satisfy statutory regulations and our license conditions we require information and relevant risk assessments if your production involves any activity that may cause significant risk. This may include but not be limited to; pyrotechnics, firearms, swords, naked flame, water, hazardous substances, personnel flying, special effects, lasers, strobes, animals and children. Should you have identified any "significant risk" you should copy us into any current risk assessments and relevant control measures or method statements.

You should also ensure that you have current certification for any equipment that requires it, i.e. P.A.T., Lifting Gear, Flame Proofing, in case you are requested to produce them either by ourselves or by the licensing authority.

Smoking on Stage:

If it is appropriate for the "artistic integrity" of the performance for a performer to smoke during a production then we will require; prior notification, a letter of justification, evidence that you have consulted your employees / voluntary workers and of course appropriate risk assessments that deal with both exposure to smoke and safe use and disposal of naked flame etc.

Fire Safety:

All scenery used on stage must be maintained flame retardant. All curtains or drapes should be of a durably or inherently flame retardant fabric and should conform to BS. 5266 Part1: 1988. As a guideline any sheet material less than 18mm (3/4") thick and timber less than 22mm nominal thickness should be treated to Class 1 (BS. 467 Part 7).

In line with current U.K. Regulations there is no smoking allowed within the building (except as part of a performance – see above).

Working Areas:

You are contractually obliged to ensure that no technical work is carried out in any area unless there is proper supervision or permission given by the Resident Manager's staff and that the touring company work within any relevant guidelines set out in the Resident Manager's safe working procedures and risk assessments.

We reserve the right to roster staff additional to your requirement if we judge that the staffing levels requested do not meet minimum safety requirements for any technical works planned or occurring.

Access Facilities

Stage Access:

Level access to the stage is presently only available to USR via Wardrobe and the Scene Dock unless alternative ramping is provided elsewhere.

Signed Performances:

Where a performance is BSL interpreted it is essential that full consideration is given to the location of the signer. To ensure best visibility this should be either DSR or DSL. Thrusted access from our offstage forestage edge can also be possible but full consideration must be given to this in advance so there is no conflict with forestage design, equipment etc. or any orchestra pit. No other position will give full visibility.

Audio Described Performances

There is a dedicated area in our Lighting control Room, rear stalls, for an audio description position. The Audio Description desk contains an Allen & Heath Mixer, with 2 dedicated headsets with microphones. Show relay is also provided into the mixer and via ambient control throughout the room. There is an un-interrupted view of the stage.

Captioned Performances

We have two Stagertext caption screens mounted on the House Right and House Left Pros booms approx. 2m above stage height. We have a laptop with the StageText software installed. A login for StageText is required for use. Control position is the same as the A.D. position as above.

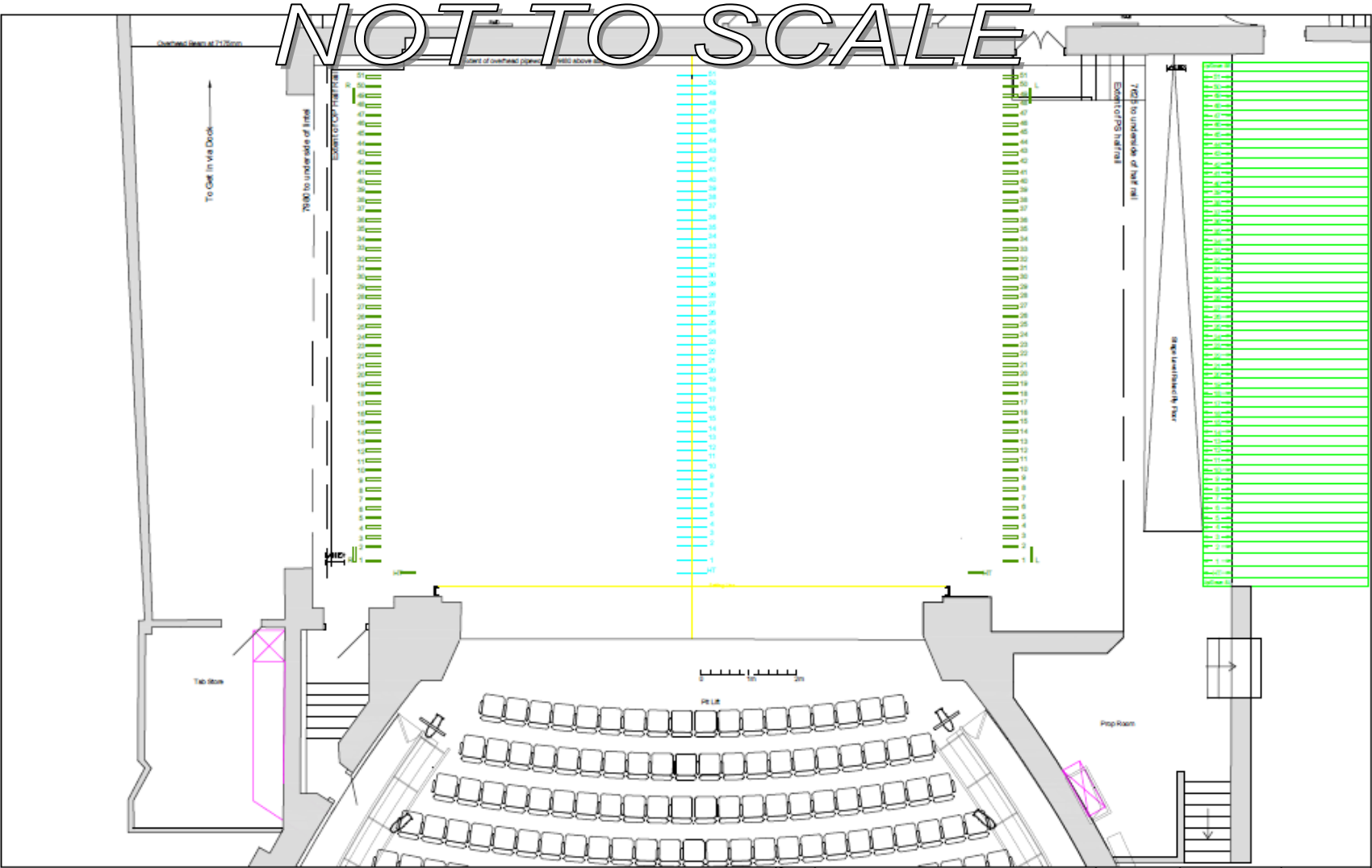
Hearing Assistance

An induction loop system covering the auditorium. A radio assisted listening/audio description system running on four frequencies on Channel 70.

Plans and Hanging Plot

The plans below are NOT TO SCALE. Scaled Plans in .dwg and .pdf format are available as downloads from the Norwich Theatre website.

Ground Plan

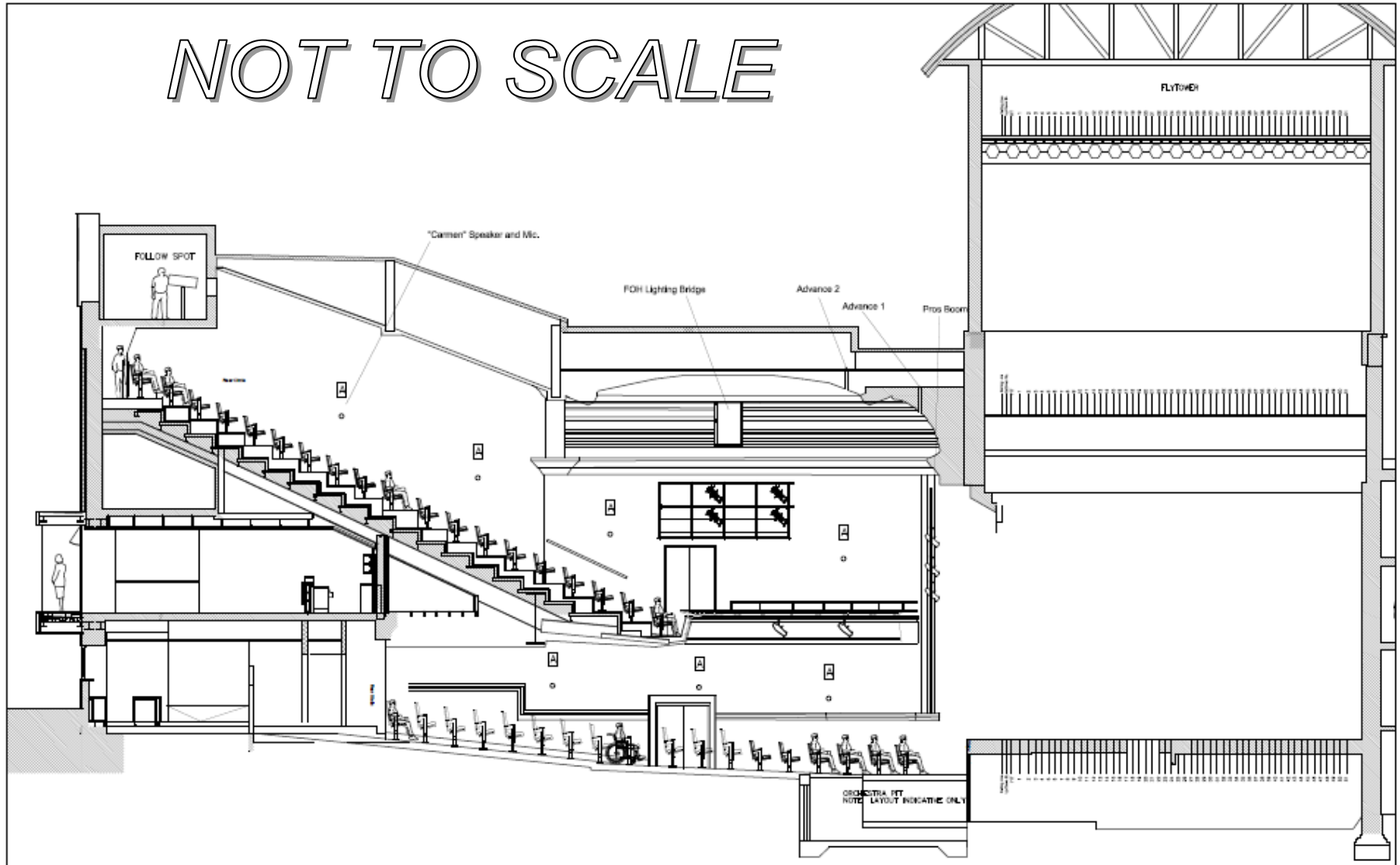


Notes

Drawn by Will Hill	File Name	Date 29.06.15	Scale 1:100 @ A4
Production Title	Drawing Title Ground Plan		
	Venue NTR		

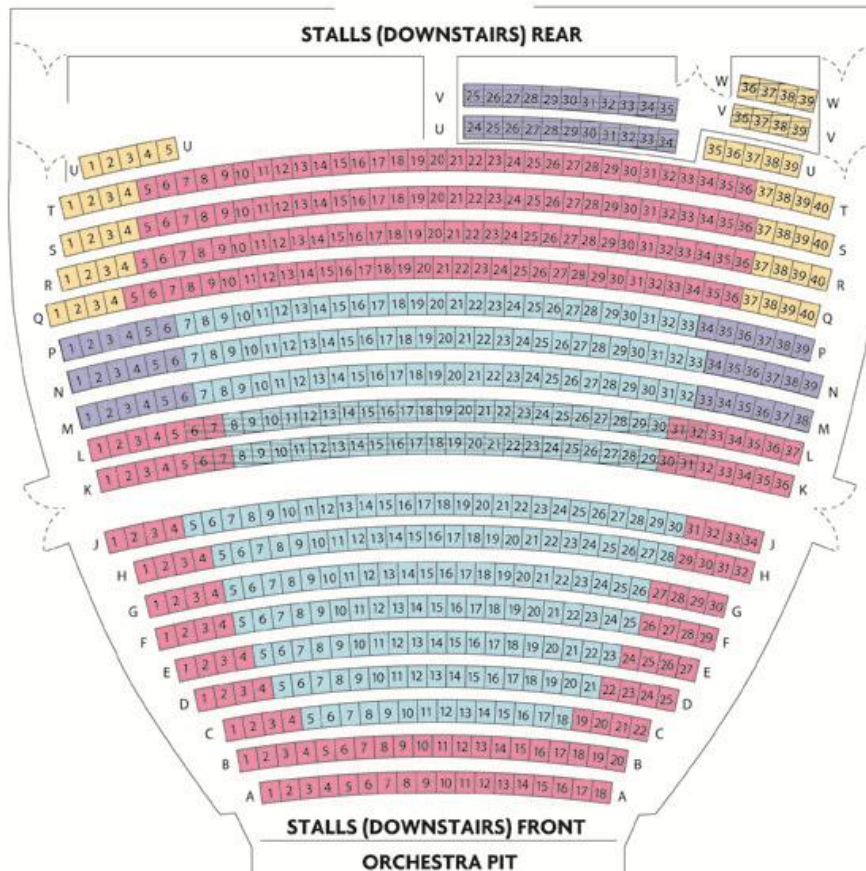
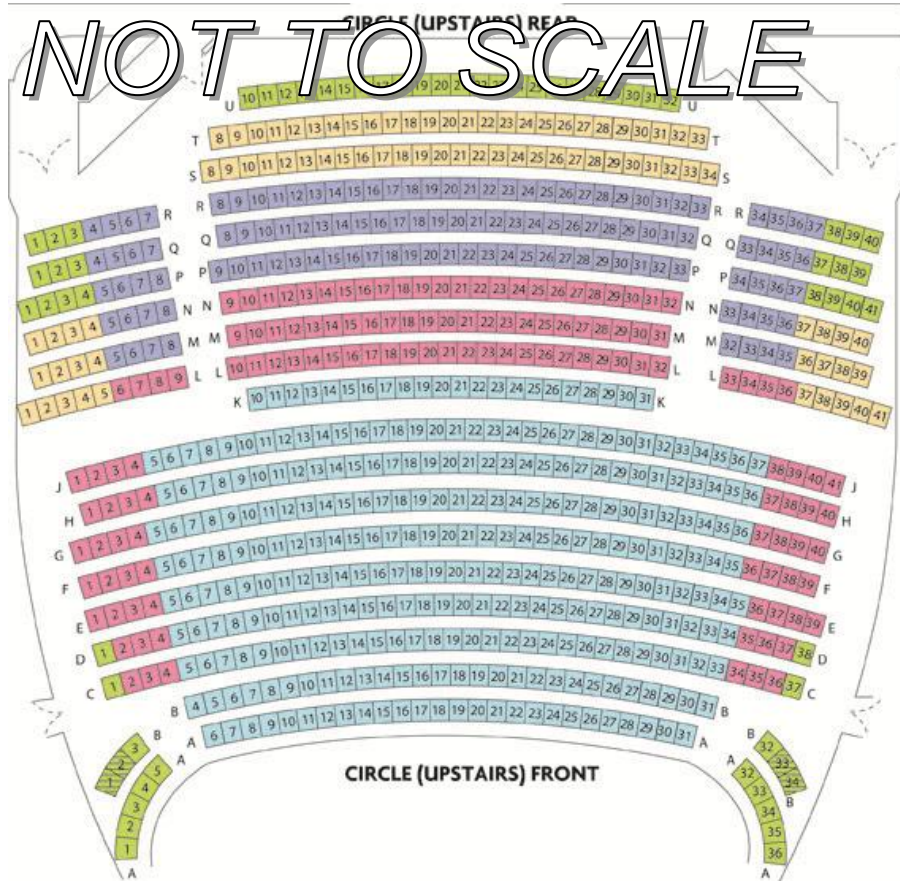
Section

NOT TO SCALE



Notes

Drawn by	Will Hill	File Name		Date	29.06.15	Scale	1:150 @ A4
Production Title		Drawing Title	Stage and Audit. Section				
		Venue	NTR				



HANGING PLOT

VENUE **Theatre Royal Norwich**

Distance from Setting Line		BAR	PIECE	FLIES	KGS	LBS	NOTES	Width	Drop
Imperial	Metric								
Feet	Inches	mm	L						
1	2	345	TABS						
1	11	590	1						
2	9	840	2						
3	5	1040	3						
4	1	1240	4						
4	9	1440	5						
5	5	1640	6						
6	0	1840	7						
6	8	2040	8						
7	4	2240	9						
8	0	2440	10						
8	8	2640	11						
9	4	2840	12						
9	12	3040	13						
10	8	3240	14						
11	3	3440	15						
11	11	3640	16						
12	7	3840	17						
13	3	4040	18						
13	11	4240	19						
14	7	4440	20						
15	3	4640	21						
16	0	4840	22						
16	6	5040	23						
17	2	5240	24						
18	0	5440	25						
18	6	5640	26						
19	2	5840	27						
19	10	6040	28						
20	6	6240	29						
21	2	6440	30						
21	9	6640	31						
22	5	6840	32						
23	1	7040	33						
23	9	7240	34						
24	5	7440	35						
25	1	7640	36						
25	9	7840	37						
26	5	8040	38						
27	0	8240	39						
27	8	8440	40						
28	4	8640	41						
29	0	8840	42						
29	8	9040	43						
30	4	9240	44						
30	12	9440	45						
31	8	9640	46						
32	3	9840	47						
32	11	10040	48						
33	7	10240	49						
34	3	10440	50						
34	11	10640	51						
Hemp	Wall	H							
		R							
				Total Flying Load	0	Kgs			
<p>Bar Capacity = 420kgs</p> <p>Setting Notes</p> <p>NB. Stage Front to setting line - 1.09m/3' 7"</p>									

This page is intentionally left blank

Why do people do that??