



# Technical Specifications

Updated 15/04/25



Stage Two  
Norwich Theatre Royal  
Theatre Street  
Norwich,  
Norfolk.  
NR2 1RL.

t. 01603 598500

[www.norwichtheatre.org](http://www.norwichtheatre.org)

## Table of Contents

<b>CONTACTS .....</b>	<b>3</b>	<b>LOOSE EQUIPMENT LIST. ....</b>	<b>12</b>
<b>GENERAL INFORMATION .....</b>	<b>4</b>	<i>Lighting Equipment .....</i>	<i>12</i>
<i>Building and Auditorium .....</i>	<i>4</i>	<i>Audio and Video Equipment .....</i>	<i>12</i>
<i>How to find us:.....</i>	<i>4</i>	<i>Stage Equipment .....</i>	<i>13</i>
<i>Directions.....</i>	<i>4</i>	<b>PLANS.....</b>	<b>14</b>
<i>Public Transport.....</i>	<i>4</i>	<i>Studio 1 Plans .....</i>	<i>14</i>
<i>Passenger Vehicles.....</i>	<i>4</i>	<i>Stage Two Section .....</i>	<i>15</i>
<i>Delivery Vehicles .....</i>	<i>4</i>	<i>Stage Two Pipe Grid and Track.....</i>	<i>16</i>
<i>Layover Parking .....</i>	<i>5</i>	<i>Alternative Seating Plans .....</i>	<i>17</i>
<i>Norwich Theatre Stage Door.....</i>	<i>5</i>	<b>STAGE TWO – STUDIO 2.....</b>	<b>19</b>
<i>Norwich Theatre Green Room.....</i>	<i>5</i>	<i>Access.....</i>	<i>19</i>
<i>Drinking Water .....</i>	<i>5</i>	<b>General .....</b>	<b>19</b>
<b>GENERAL NOTES .....</b>	<b>6</b>	<i>Flooring .....</i>	<i>19</i>
<i>Equipment Charges.....</i>	<i>6</i>	<i>Dimensions .....</i>	<i>19</i>
<i>Staffing .....</i>	<i>6</i>	<i>Technical Equipment .....</i>	<i>19</i>
<b>STAGE TWO – STUDIO 1 .....</b>	<b>6</b>	<i>Studio 2 Plan .....</i>	<i>20</i>
<i>Access .....</i>	<i>6</i>	<b>STAGE TWO – STUDIO 3.....</b>	<b>21</b>
<i>General .....</i>	<i>7</i>	<i>Access.....</i>	<i>21</i>
<i>Floor.....</i>	<i>7</i>	<i>General.....</i>	<i>21</i>
<i>Dimensions .....</i>	<i>7</i>	<i>Dimensions.....</i>	<i>21</i>
<i>Lifting Equipment.....</i>	<i>7</i>	<i>Technical Equipment .....</i>	<i>21</i>
<i>Soft Goods .....</i>	<i>7</i>	<i>Studio 3 Plan .....</i>	<i>22</i>
<i>Projection Screen .....</i>	<i>7</i>	<b>HEALTH AND SAFETY .....</b>	<b>23</b>
<i>Pipe Grid and Track.....</i>	<i>7</i>	<i>Policy:.....</i>	<i>23</i>
<i>Access Eqpt.....</i>	<i>7</i>	<i>C.D.M: .....</i>	<i>23</i>
<i>Rostra .....</i>	<i>7</i>	<i>Paperwork:.....</i>	<i>23</i>
<i>Dressing Rooms .....</i>	<i>8</i>	<i>Smoking on Stage:.....</i>	<i>23</i>
<i>Accessibility Aids.....</i>	<i>8</i>	<i>Fire Safety: .....</i>	<i>23</i>
<b>LIGHTING .....</b>	<b>8</b>	<i>Working Areas:.....</i>	<i>23</i>
<i>Desk .....</i>	<i>8</i>		
<i>Racks.....</i>	<i>8</i>		
<i>D.M.X. and Ethernet .....</i>	<i>8</i>		
<i>Power.....</i>	<i>8</i>		
<i>Lighting Equipment.....</i>	<i>8</i>		
<i>Lighting Plan .....</i>	<i>Error! Bookmark not defined.</i>		
<b>SOUND .....</b>	<b>10</b>		
<i>Desk .....</i>	<i>10</i>		
<i>Playback .....</i>	<i>10</i>		
<i>Speakers .....</i>	<i>10</i>		
<i>Audio and Speaker Tie Lines.....</i>	<i>10</i>		
<i>Cable Mics .....</i>	<i>10</i>		
<i>Comms.....</i>	<i>10</i>		
<i>Portable Racks .....</i>	<i>10</i>		
<i>Accessibility Aids .....</i>	<i>10</i>		
<b>VIDEO .....</b>	<b>11</b>		
<i>Video Tie Lines .....</i>	<i>11</i>		
<i>Projector .....</i>	<i>11</i>		

## CONTACTS

Technical support is provided via Norwich Theatre Technical Department.

Technical and Buildings Director	Will Hill	01603 598550
	<a href="mailto:will.hill@norwichtheatre.org">will.hill@norwichtheatre.org</a>	
Head of Technical Operations	Tara Claxton	01603 598568
	<a href="mailto:tara.claxton@norwichtheatre.org">tara.claxton@norwichtheatre.org</a>	
Head of Stage	Mark Bobbitt	01603 598500
	<a href="mailto:mark.bobbitt@norwichtheatre.org">mark.bobbitt@norwichtheatre.org</a>	
Head of Lighting	Darren Male	01603 598500
	<a href="mailto:darren.male@norwichtheatre.org">darren.male@norwichtheatre.org</a>	
Head of Sound	Darren Fuller	01603 598558
	<a href="mailto:darren.fuller@norwichtheatre.org">darren.fuller@norwichtheatre.org</a>	
Head of AV	Declan Matwij	01603 598527
	<a href="mailto:dec.matwij@norwichtheatre.org">dec.matwij@norwichtheatre.org</a>	
Senior Technician (Stage and Facilities)	Richard Ducker	
Senior Technician (Stage and SMgmt)	Emma Maxwell	
Senior Technician (Lighting)	Kyle Fuller	
	<a href="mailto:technical@norwichtheatre.org">technical@norwichtheatre.org</a>	

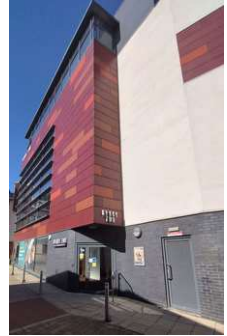
### Other Contacts

Head of Visitor Services (New name for F.O.H.!!)	James MacDonald	01603 598578
	<a href="mailto:james.macdonald@norwichtheatre.org">james.macdonald@norwichtheatre.org</a>	
Visitor Services Duty Manager Mobile		07425 459690
Stage Door		01603 598500
	<a href="mailto:visitorservices@norwichtheatre.org">visitorservices@norwichtheatre.org</a>	
Head of Programming & Producing	Sam Bain	01603 598620
	<a href="mailto:sam.bain@norwichtheatre.org">sam.bain@norwichtheatre.org</a>	
Programming Manager	Rachel Lloyd	01603 598611
	<a href="mailto:rachel.lloyd@norwichtheatre.org">rachel.lloyd@norwichtheatre.org</a>	
Head of Creative Engagement	Sam Dawson	01603 598622
	<a href="mailto:sam.dawson@norwichtheatre.org">sam.dawson@norwichtheatre.org</a>	
Head of Artistic Development	Jez Pike	01603 598625
	<a href="mailto:jez.pike@norwichtheatre.org">jez.pike@norwichtheatre.org</a>	

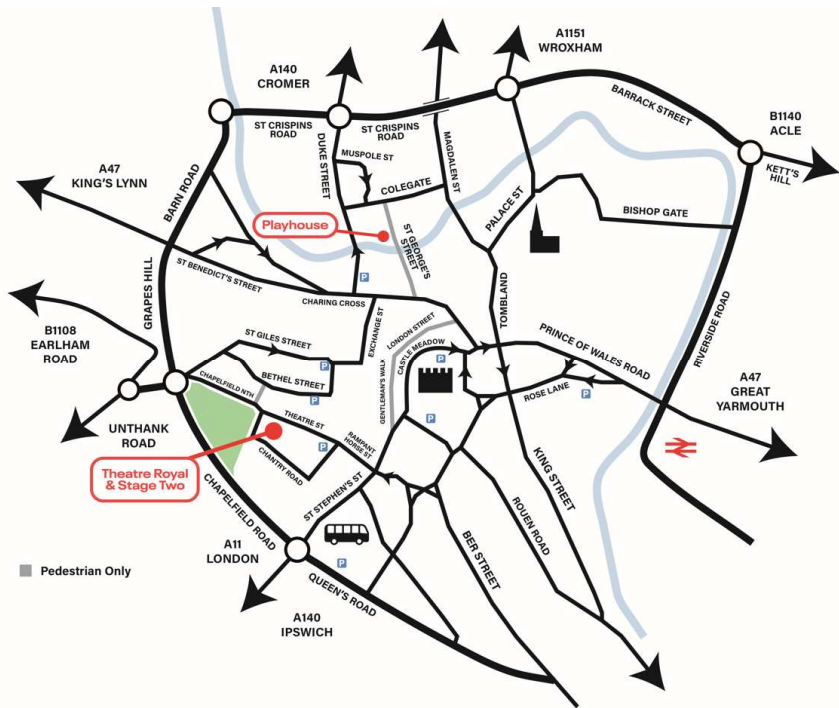
## GENERAL INFORMATION

### Building and Auditorium

Stage Two opened in 2016 and is the newest member of the Norwich Theatre family of venues. It is a creative hub for people of all ages and ideas where audiences and artists can explore, create and be inspired. It provides a fully-equipped 120-seat studio theatre space as well as rehearsal studios and training spaces.



### How to find us:



### Directions

From the Chapel Field roundabout take Chapelfield North along the side of Chapelfield Park. At the end of the park turn right onto Chapelfield East and then first left onto Chantry Road.

### Public Transport

Norwich Bus Station is about a 5 minutes walk. <https://www.konectbus.co.uk/>

Norwich Train Station is about 15 minutes walk. <https://www.greateranglia.co.uk/travel-information/station-information/nrw>

### Passenger Vehicles

Very limited parking spaces may be available on our side and rear car parks by special arrangement via your Company or Tour Manager or with our Visitor Services Manager or Technical and Buildings Director. Vehicles parked without permission may be subject to a penalty charge notice. There are numerous pay and display car parks nearby, a map can be downloaded here: [https://www.norwich.gov.uk/downloads/file/3368/norwich\\_parking\\_planner](https://www.norwich.gov.uk/downloads/file/3368/norwich_parking_planner)

### Delivery Vehicles

Scenic deliveries are via the main entrance doors or by arrangement via the rear entrance (a little closer to auditorium but involves three steps). Unloading and Loading only. Parking only by arrangement with your Technical contact. <http://grand.host.scarcelly>

**Layover Parking**

Layover parking is available at several locations in the city centre:

King Street NR1 2BU,  
Rouen Road NR1 1QP,  
Lower Clarence Road NR1 1HA  
Harford Park & Ride NR4 6GA.

**Norwich Theatre Stage Door**

Norwich Theatre Stage Door is located opposite the Stage Two entrance doors. The position is not permanently manned and has intercom access if unattended. [///affair.haven.clap](http://affair.haven.clap)

**Norwich Theatre Green Room**

The Green Room is located adjacent to the stage door and is available for the use of all venue and touring staff. There is a large seated table and side seating, sinks and washing up facilities, fridges, microwaves, cutlery and crockery. Complimentary tea and coffee facilities are also available.

**Drinking Water**

All stage two cold water taps have potable water. There is a refillable bottle station on the 2<sup>nd</sup> floor.

## GENERAL NOTES

### Equipment Charges

The loose staging, lighting, sound and AV equipment listed below is available for your use as specified in your contract. The standard lighting rig, sound system and masking set up are available free of charge. The standard contract allowance is shown in the Loose Equipment List within this document. Any non-contracted equipment requested, specified or required will be charged back to the production via the contra at the rates listed. As a general rule we will be cheaper than a local hire alternative.

Some of this equipment is also available for external hire so please check availability before your event.

### Staffing

If Production systems are being used, a Duty Technician must be present. It should have been agreed pre-contract whether there are any costs associated with the provision of a Duty Technician or any other staffing requirements.

Should you be paying for any staffing then the associated cost will be recharged after the event usually within a week. Current rates can be provided by your booking contact or direct from the Norwich Theatre Technical Department: [technical@norwichtheatre.org](mailto:technical@norwichtheatre.org)

## STAGE TWO – STUDIO 1



### Access

Off road parking (by arrangement) for deliveries at street level. Main entrance to building is via double doors opposite Theatre Royal Stage Door. The Auditorium is located directly off the main reception area through a pair of double doors. Access is flat. The smallest door dimension is 975mm width and 2025mm height. The route in would be tight for anything longer than 4.3m. Alternative access for lengthy items is possible via rear auditorium door but please contact us first if that is the case.

**General**

The room has usable floor space approx. 13.2m long and 8.8m wide. It is well equipped with a lighting, sound and drapes package as detailed below.

**Floor**

The floor is flat and consists of a sprung Junckers 22mm Beech surface coloured "Dark Coco". By agreement the floor can be taped on/screwed into.

**Dimensions**

Back wall to stored bleachers	= 13.26m
Room width	= 8.82m
Grid height	= 6.02m
Hoist Flying Height	= 6.10
Main Entrance Doors	= 1.02m (W) x 2.03m (H)

**Lifting Equipment**

2 x single speed 4 line electric hoists. 250kgs SWL. Operated from a pendant controller plugging in MSL.

Bar Length	= 7000mm
Bar O.D.	= 48mm
Bar I.D.	= 36mm
Lifting Capacity	= 250kgs (UDL)
Lift Speed	= 6m/minute

**Soft Goods**

There are two sets of black serge Half Tabs; Pair One are each 4.5m width and 5.78m drop, Pair Two are each 4m width x 5.78m drop. Pair one can be used as an upstage black backing, Pair Two can be used as a set of wipeable tabs for an end on setting. There are eight black serge legs at 1.2m width and 5.78m drop that can rig on the perimeter Triple E Unicyc track. There is a White filled cloth at 6.8m width and 5.75m drop that can be used as an upstage cyc if not using the existing projection screen for that purpose.

**Projection Screen**

There is a motorized retractable Screen International Cine Pro matt white projection screen at 7m width and 5.75m drop. This is permanently mounted 400mm downstage of the crossover corridor wall. Usable as a cyc also.

**Pipe Grid and Track**

There is a pipe grid throughout the room consisting of seven bars along the length of the room, five of which are IWB's wired for sound and AV, and six bars across the width of the room which are IWB's wired for mains and data.

There is a track system of Triple E unicyc that runs around the perimeter of the room with a points system to access a midstage track. There are two Triple E Unitrack tab tracks rigged as single tracks with overlap arms. One is 8m width and can be used on either of the two motorised hoists, the other is 7m width and can be rigged to be used for wipeable tabs in an endstage setting.

**Access Eqpt**

1 x Genie GR15 runabout MEWP. One set of Zarges Industrial 3-part Skymaster 10 rung extendable ladders. One Zarges 6 tread platform step

**Rostra**

8 sheets of 2m x 1m Metrodeck and various height legs (280mm, 350mm, 530mm, 710mm).

## Dressing Rooms

Floor	Name	Capacity	Facilities						
			WC	Shower	Bath	Phone 01603	Fridge	TV	Wi-Fi
First Floor	1	6	✓ adjacent	✓ adjacent	x	x	x	x	✓
	2	6	✓ adjacent	✓ adjacent	x	x	x	x	✓

Most back stage areas have free WiFi coverage on: stagetwoquest

## Accessibility Aids

The Auditorium has an induction loop throughout and a radio assisted listening system. The Studio and Training Room both have induction loop systems. Caption screens are available by arrangement with the Theatre Royal Technical Department.

## LIGHTING

### Desk

ETC Element 40 - 500 Channels

### Racks

01 x ETC Sensor Rack 72 Ways of 15A Thru-power Dim/non-dim ETR15AFR modules

### D.M.X. and Ethernet

Large network of tie lines spread around the Theatre space. Ethernet tie lines spread around the Theatre space

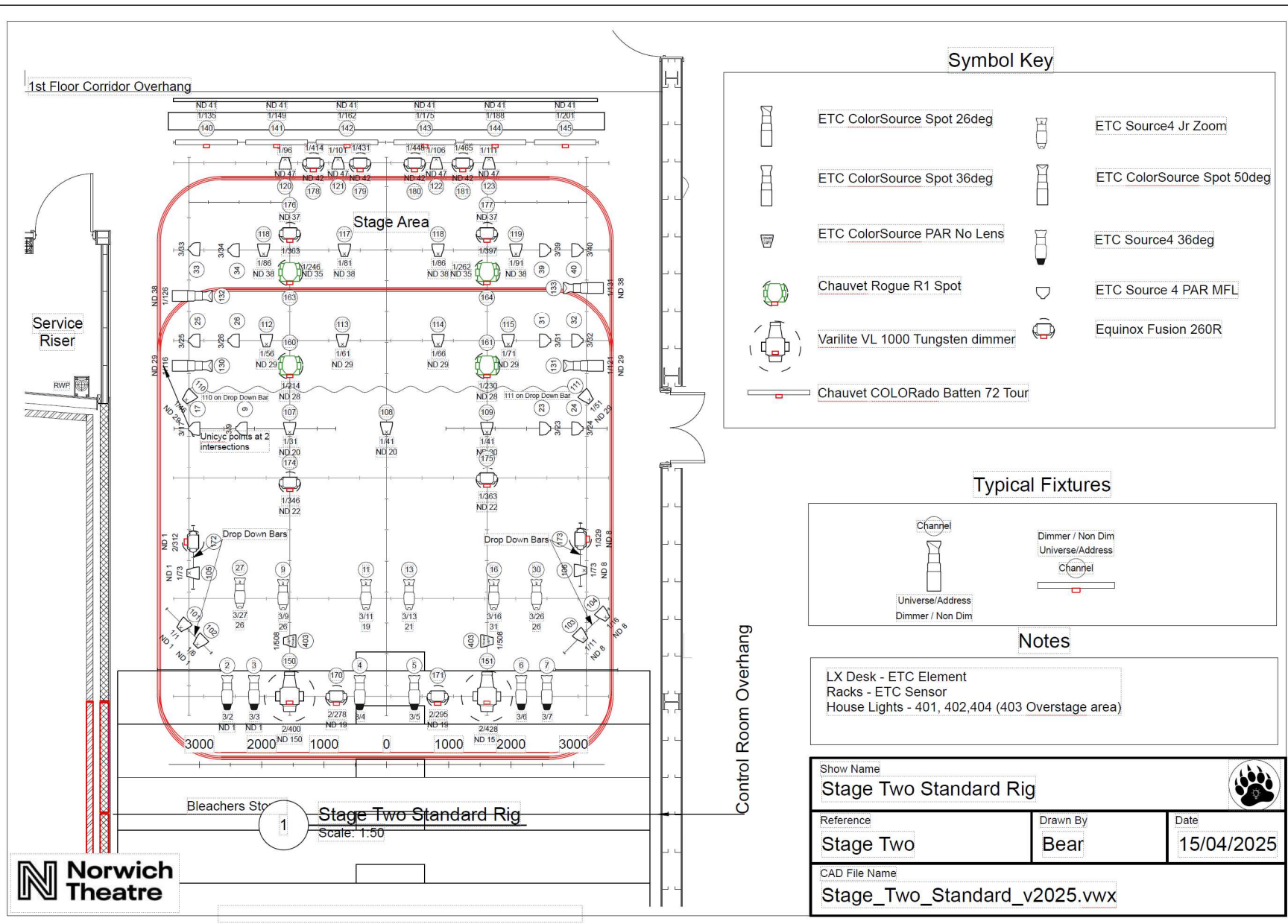
### Power

There is a single phase 32amp cee Form supply located in the Control Room. This is on a 30ma RCD.

### Lighting Equipment

No.	Type	Notes
4	ETC Colorsourc Profiles	
24	ETC Colorsourc Pars	
2	Vari Light 1000 tungsten	
10	Chauvet Colorado Battens 72 Tour	4 loose
12	Equinox Fusion 260R LED Wash Lights	
4	Chauvet R1 Spots	
24	ETC Souce Four Par	10 loose
6	ETC Souce Four Jr 25-50	These are moveable
Please note that the overhead lighting equipment is rigged as a "standard rig" which should satisfy most requests. It is possible to add additional toured or in house lanterns (subject to availability) and to make "minor" adjustments to the rig. Major changes to the "standard rig" will only be permitted where time has been scheduled for a reset and costs agreed.		





# SOUND

## Desk

Allen and Heath GLD80 in the Control Room.

## Playback

The Control Room has 1x Mac Mini running QLab 5 (Audio & Video).

## Speakers

No.	Type	Notes
2	D&B CIE60	All d&b speakers have 10D power amplifiers.
2	D&B E12 Sub	
2	D&B E0	
2	15" Maxx	Monitor Speakers

## Audio and Speaker Tie Lines

Audio - Distributed throughout the auditorium patched via a GPO patch bay in the Dimmer Room.

There is a AR24/12 stage box located DSR.

Speaker - Distributed throughout the auditorium patched via a NL4 patch bay in the Dimmer Room.

## Cable Mics

Make	Type
Shure	2 x SM58
Crown	2 x pcc 160
Shure	2 x Handheld Microphones

## Comms.

Paging system to Dressing Rooms from Control Room. Paging to FOH from FOH reception and Control Room.

Stage intercom to all positions, provided by a 2 channel Clear-Com system 4 x sets

## Portable Racks

One flight cased units that can be used in any of the three rooms. They each contain: CD, iphone, 3.5mm jack and Bluetooth inputs with an Alesis MM10 multimix and associated amplifier. These plug to an RCF speaker system. Auditorium and Studio are RCF M801's, Training Room is RCF M601's .

Studio 1 has a control panel located DSR which can control the power and inputs of the projector.

## Accessibility Aids

<b>Loop System</b>	Not a stand alone system - relies on the Production Sound System being on.
<b>Access</b>	Sennheiser Radio assisted listening and audio description system.

## Licensing

PRS licensing must be held for all music playback. Spotify/ Apple Music or any other music streaming platform should not be used for sound playback, as it is not covered under PRS.

## **VIDEO**

### **Video Tie Lines**

10 x Available throughout the auditorium, 2 in the Studio and 2 in the Training Room. All linked to a BNC patch in the Dimmer Room.

There is a HDMI socket located DSR which goes directly to the Blackmagic Switcher located in the control room. There are local HDMI inputs in the control room.

### **Projector**

Panasonic PTDW830EK (8300 Lumen). Local control room inputs are HDMI. Auditorium input is HDMI. Larger hire stock projectors are available on request.

### **Control**

Blackmagic ATEM 1 Constellation.

## LOOSE EQUIPMENT LIST.

The prices below are current to the updated date these may be subject to change. Please contact us for an updated costing if required. A detailed hire stock can be found at: [www.hire.norwichtheatre.org](http://www.hire.norwichtheatre.org)

**\*\*Please Note the equipment is not a stock list which available within stage 2 this list refers to Norwich Theatres stock and can be hired/made available by prior arrangement**

The equipment listed below is available for your use as specified in your contract. The standard contract allowance is shown in the relevant column. Any non-contracted equipment requested, specified or required will be charged back to the production via the contra at the rates listed.						
Lighting Equipment	Standard Contract	Stock	Hire Charges (ex V.A.T.)		Updated	17.09.24
			Per Day	Per Week	Notes	
Lanterns						
ETC Source Four 750w Fixed Beam	6	104	£6.00	£12.00	16 x 36",16 x 50",30 x 26",28 x 19",06 x 70",6 x 90",2 x 14". 20 x 19" & 20 x 26" are normally rigged FOH.	
ETC Souce Four Jr 25-50	6	6	£5.00	£12.00	These are movable	
ETC Colour-Source LED Profile Fixed Beam	6	28	£7.00	£14.00	Various Lenses available, 12 = Deep Blue, 16 Standard	
ETC Source Four Lustr+ LED Profile	0	06	£8.00	£16.00	Various Lenses available	
Strand Cantata F / PC 1200w.	0	10	£4.00	£8.00		
Strand Cantata PC 1200w.		40	£4.00	£8.00		
Chauvet COLORado Batten 72	6	10	£10.00	£20.00	6 Rigged, 4 loose	
Thomas Par 64 Can 60, 61, 62. 1000w.	8	150	£3.50	£7.00	Loose	
Source Four Par	12	24	£5.00	£10.00	Various Lenses Available	
ETC Color-Source LED Pars	24	46	£6.00	£12.00	18 = Deep Blue, 28 Standard	
Thomas Floor Cans 60, 61, 62. 1000w.	0	12	£4.00	£8.00		
Strand Alto Fresnel. 2000w	0	6	£9.00	£18.00		
VL 1000 Profile	2	2	£30.00	£60.00		
Chauvet Rogue™ R1 Spot	4	4	£35.00	£70.00		
Mac Encore performance Cool White LED Profile	0	4	£40.00	£80.00		
Effects						
Look Solutions Viper NT Smoke Machine.	1	4	£25.00	£50.00	price includes fluids	
Jem AF1 DMX Fans.	1	4	£18.00	£36.00		
Look Solution Unique Haze Machine.	1	4	£25.00	£50.00	Price includes fluids	
Mirror Ball and rotators.	0	2	£12.00	£24.00	2 x 500mm (20") diameter	
UV Cannon	0	5	£12.00	£24.00		
Accessories						
Lighting Stands (4'6")		8	£1.25	£2.50		
Lighting Stands large		2	£2.00	£4.00		
Lighting Ladders.		8	£6.00	£12.00		
Conductor twin music stand		1	£8.00	£16.00		
Music Stands Rat Type.		14	£4.00	£8.00		
4 x 2m Booms	4	8	£35.00	£52.00		
Gobo Holders for ETC Profiles	4	50	£1.50	£3.00	Rigged	
Irises for ETC Profiles	0	16	£4.00	£8.00		

Audio and Video Equipment	Standard Contract	Stock	Hire Charges (ex V.A.T.)		Updated	17.09.24
			Per Day	Per Week	Notes	
Speakers						
d&b E12/E8/E6 Speakers		2/6/4	£10/£8/£6	£20/£16/£12		
Wedge Speakers	2	8	£5.00	£10.00		
Small Powered Speaker - Yamaha MP55		4	£5.00	£10.00		
Microphones						
Cable Microphones (Dynamic)	2	8	£4.50	£9.00	Details in 'Sound' section	
Cable Microphones (instrument)		8	£6.00	£12.00	Details in 'Sound' section	

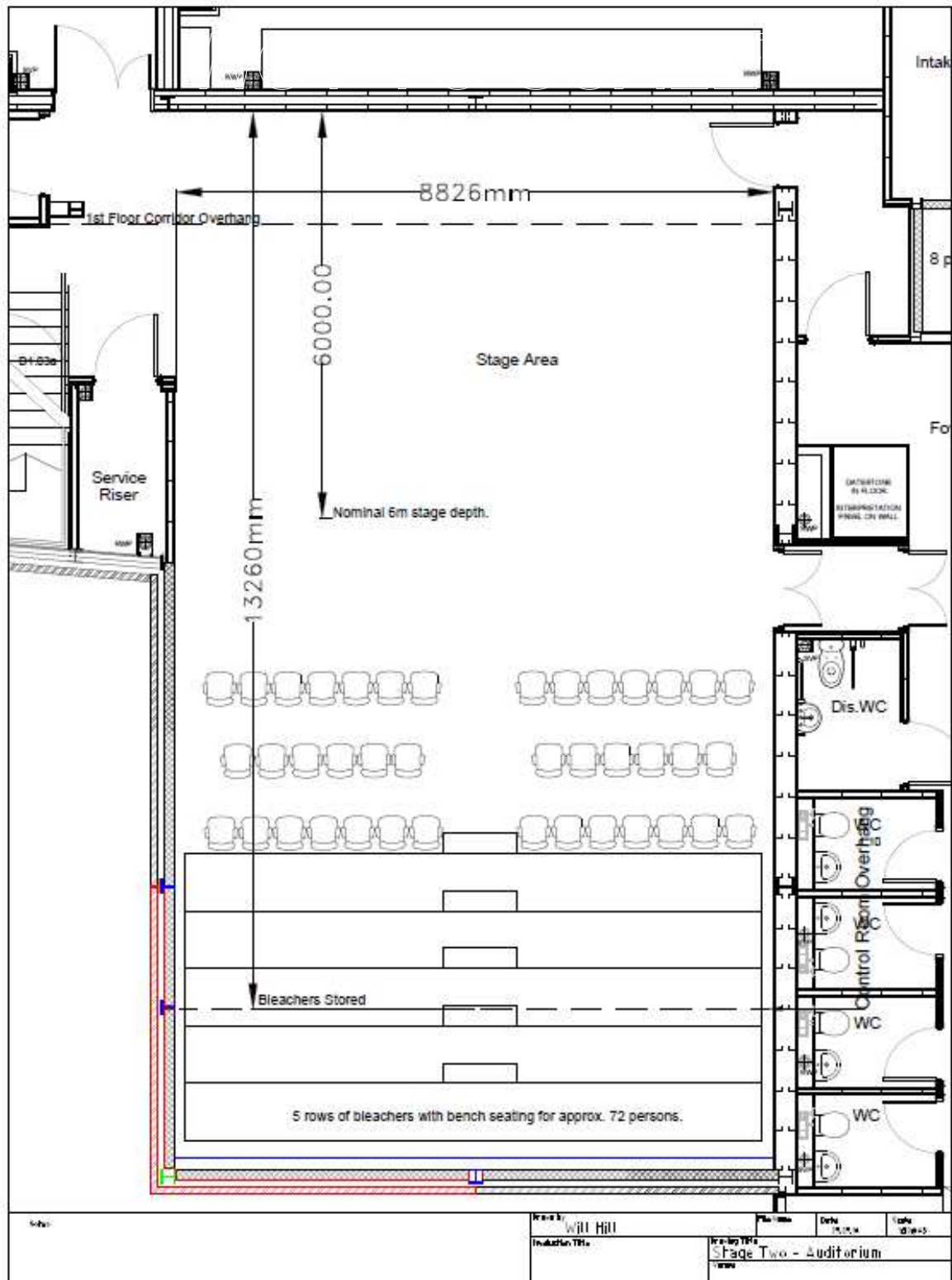
Radio Mics (standard mic. head)	2	35	£30.00	£60.00	Details in 'Sound' section
Float Mics	2	4	£6.00	£12.00	Crown PCC 160/DPA4097
D.I. Boxes	3	8	£3.50	£7.00	
Mac Mini (Qlab sound and DVS)	1	2	£20.00	£60.00	
Intercom Belt Pack & Headset	3	8	£4.00	£8.00	
Motorola CP040 16Ch Radio's	0	6	£10.00	£20.00	Duplex Radio Walkie Talkie system
Radio Cans	0	8	£15.00	£30.00	HME System
<b>AV Equipment</b>					
Panasonic PTDW830EK Projector	1	1	£100.00	£400.00	Rigged. Standard lens (0.85 lens by arrangement), hanging frame.
Screen Monitor	1	2	£10.00	£20.00	

Stage Equipment	Standard Contract	Stock	Hire Charges (ex V.A.T.)		Updated	17.09.24
			Per Day	Per Week	Notes	
<b>Soft Goods</b>						
Black Serge Legs	6	6	£ -	£ -	3 x Pairs	
Black Serge Half Tabs	2	4	£ 10	£ 25	2 x pairs	
Cyclorama (White Screen)	1	1	£ -	£ -	Fixed position , roll up screen	
White Filled Cloth	0	1	£ 10	£ 25		
<b>Staging</b>						
Metrodeck (2000 x 1000)		6	£9.00	£18.00	More may be available from Theatre Royal stock. Various leg sizes available	

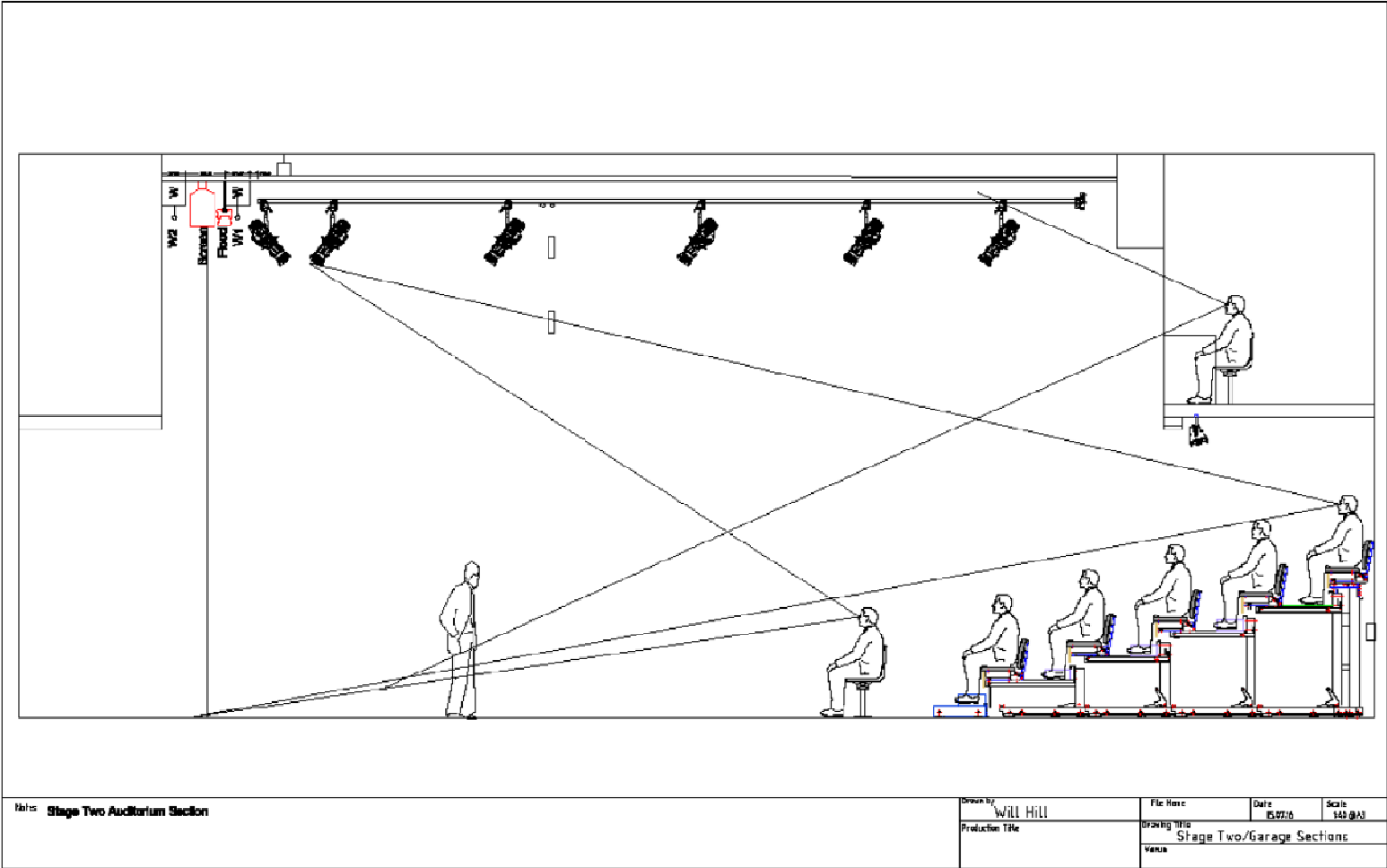
# PLANS

## Studio 1 Plans

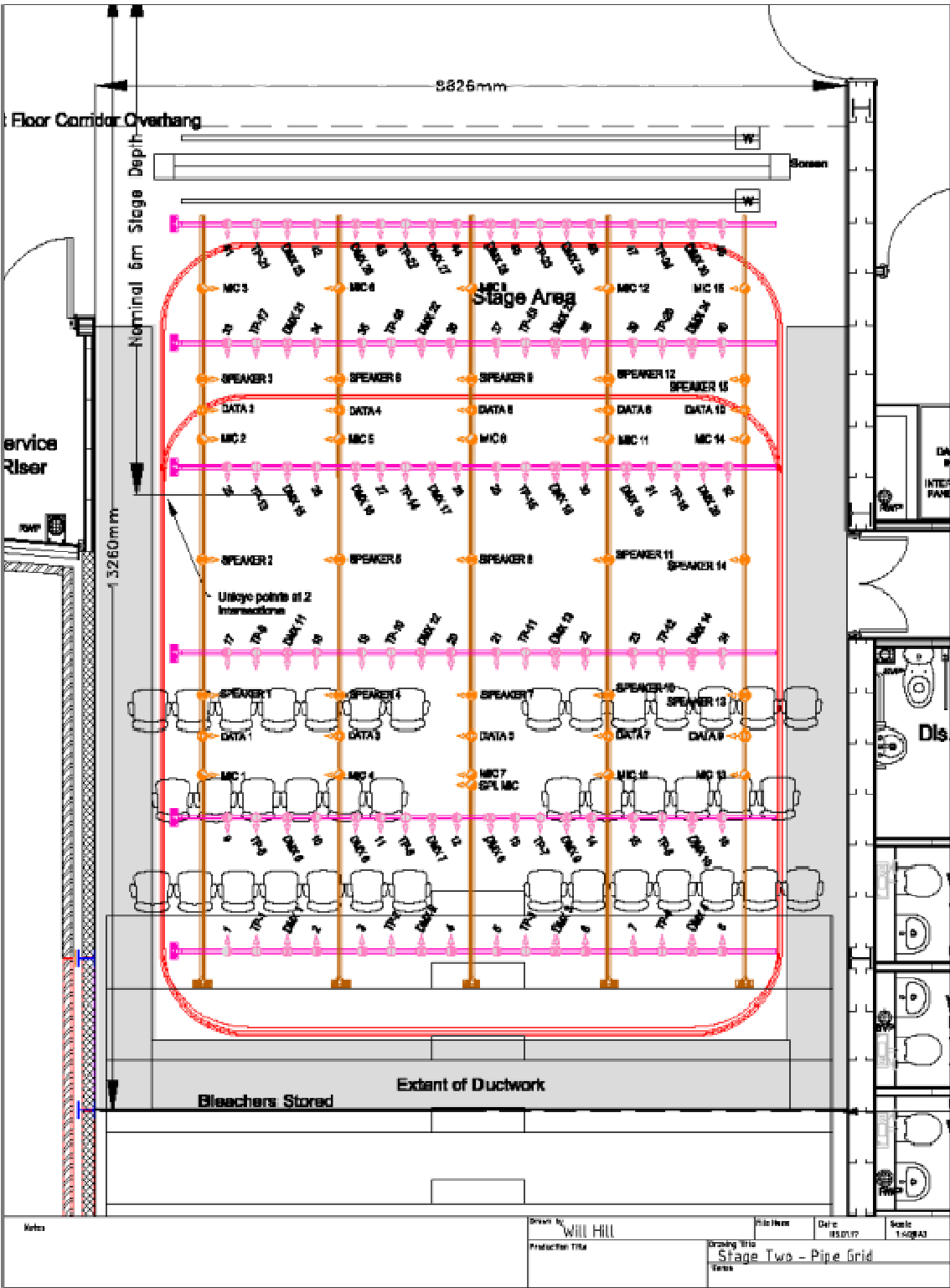
The plans below are NOT TO SCALE. Scaled Plans in .dwg and .pdf format are available as downloads from the Theatre Royal website.



Stage Two Section



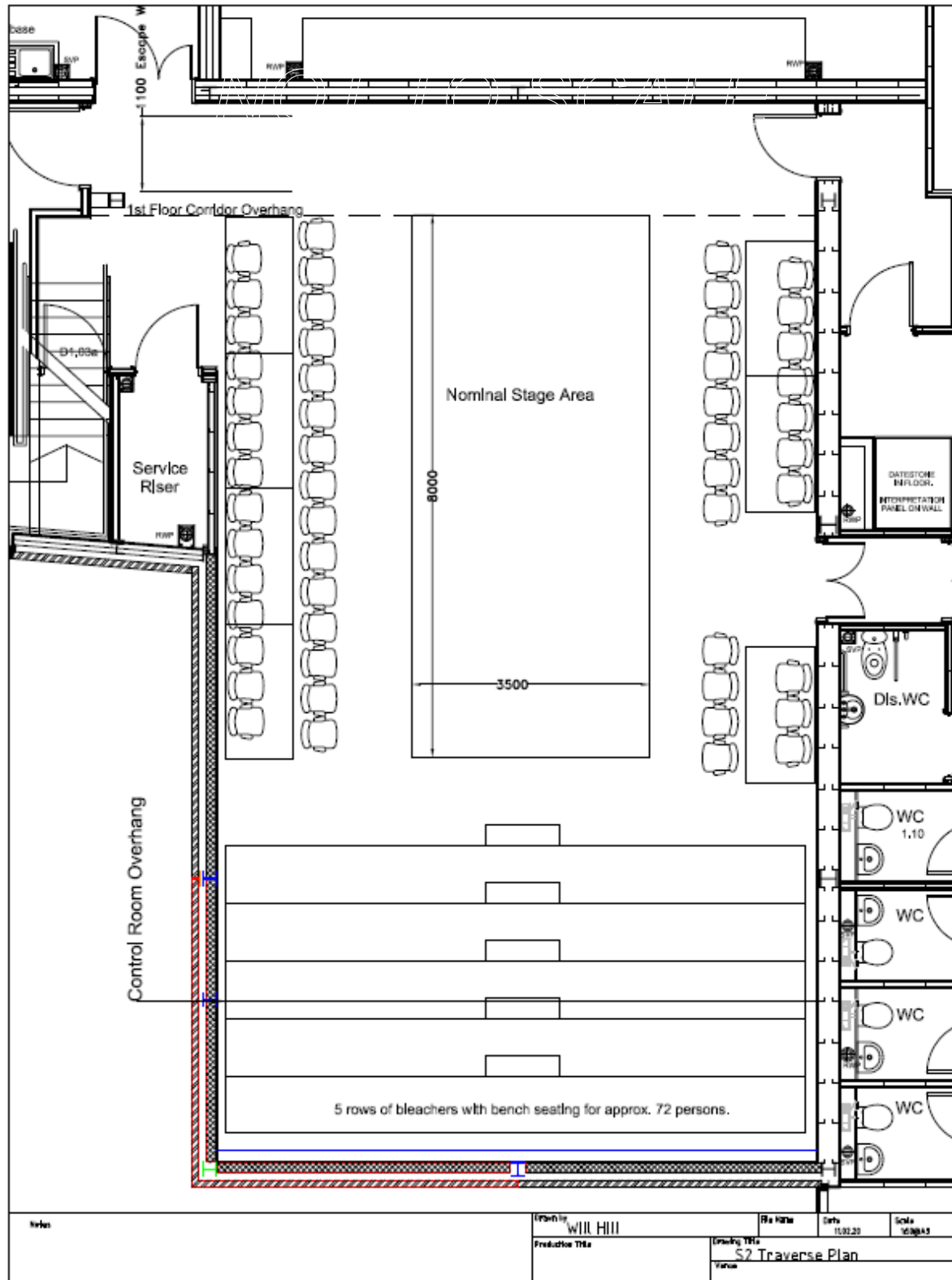
Stage Two Pipe Grid and Track



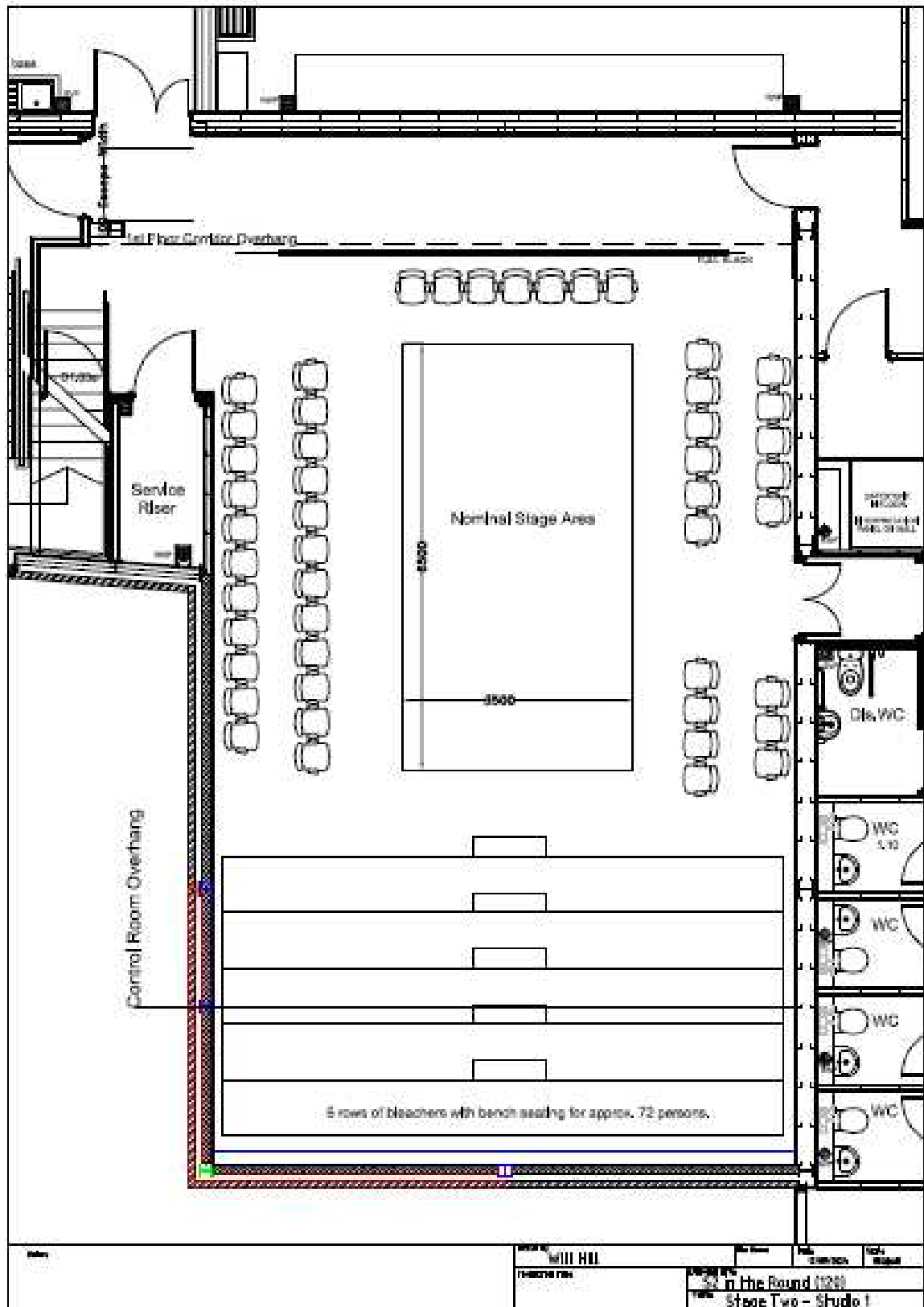


## Alternative Seating Plans

*NOT TO SCALE*



*NOT TO SCALE*



## STAGE TWO – STUDIO 2



### Access

Main entrance to building is via double doors opposite Theatre Royal Stage Door. The Studio is located on the 2<sup>nd</sup> floor but can be accessed by steps or a lift.

### General

The studio is well lit, well ventilated and spacious. The closest W.C is just outside the studio space on the same level. There is also a water dispenser just outside the studio. The room has a full wall of mirrors, which can be curtained off if required. Tables, chairs and soft flooring can also be supplied. Please request these at booking.

### Flooring

Sprung Dance Floor

### Dimensions

14180mm x 8860mm

### Technical Equipment

Speakers: RCF M801's flight cased portable sound unit.

Projector & Electronic Whiteboard with Pens

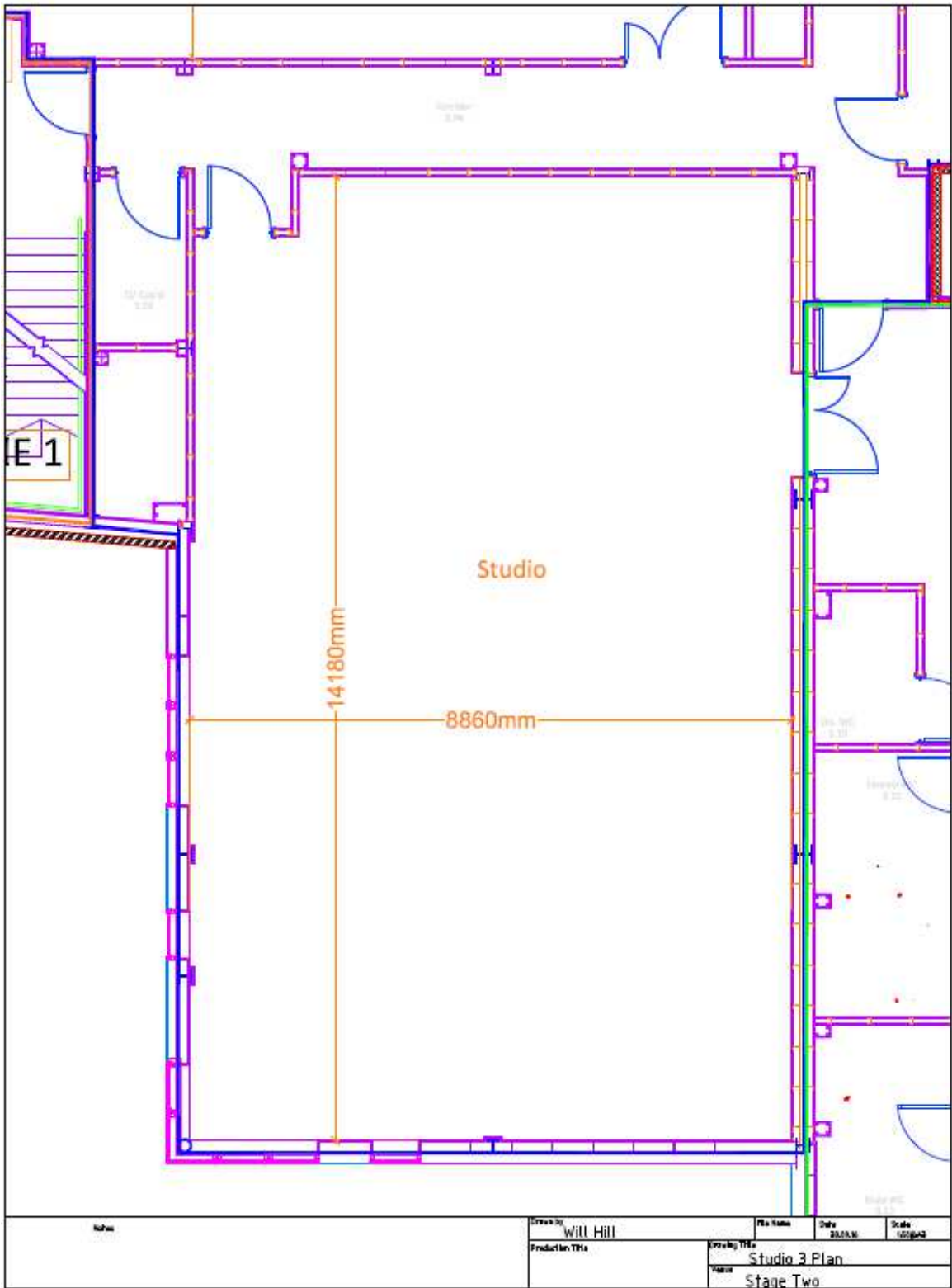
Lighting bars and cable infrastructure with the facility to add lights.

Portable Racks - One flight cased units that can be used in any of the three rooms. They each contain: CD, iPhone, 3.5mm jack and Bluetooth inputs with an Alessis MM10 multimix and associated amplifier. These plug to an RCF speaker system. Auditorium and Studio are RCF M801's, Training Room is RCF M601's.

Stand Alone Induction Loop System.

Available by request: Handheld Radio Microphones.

Studio 2 Plan



## STAGE TWO – STUDIO 3



### Access

Main entrance to building is via double doors opposite Theatre Royal Stage Door. The Studio is located on the 2<sup>nd</sup> floor but can be accessed by steps or a lift.

### General

The studio is well lit, spacious and self-sufficient. Located at the rear of the room are washing up facilities as well as tea and coffee making facilities. A water dispenser can be found outside the room. The closest W.C is just outside the studio space on the same level.

### Dimensions

12840mm x 5640mm

### Technical Equipment

Speakers: RCF M601's flight cased portable sound unit.

Projector & Electronic Whiteboard with Pens

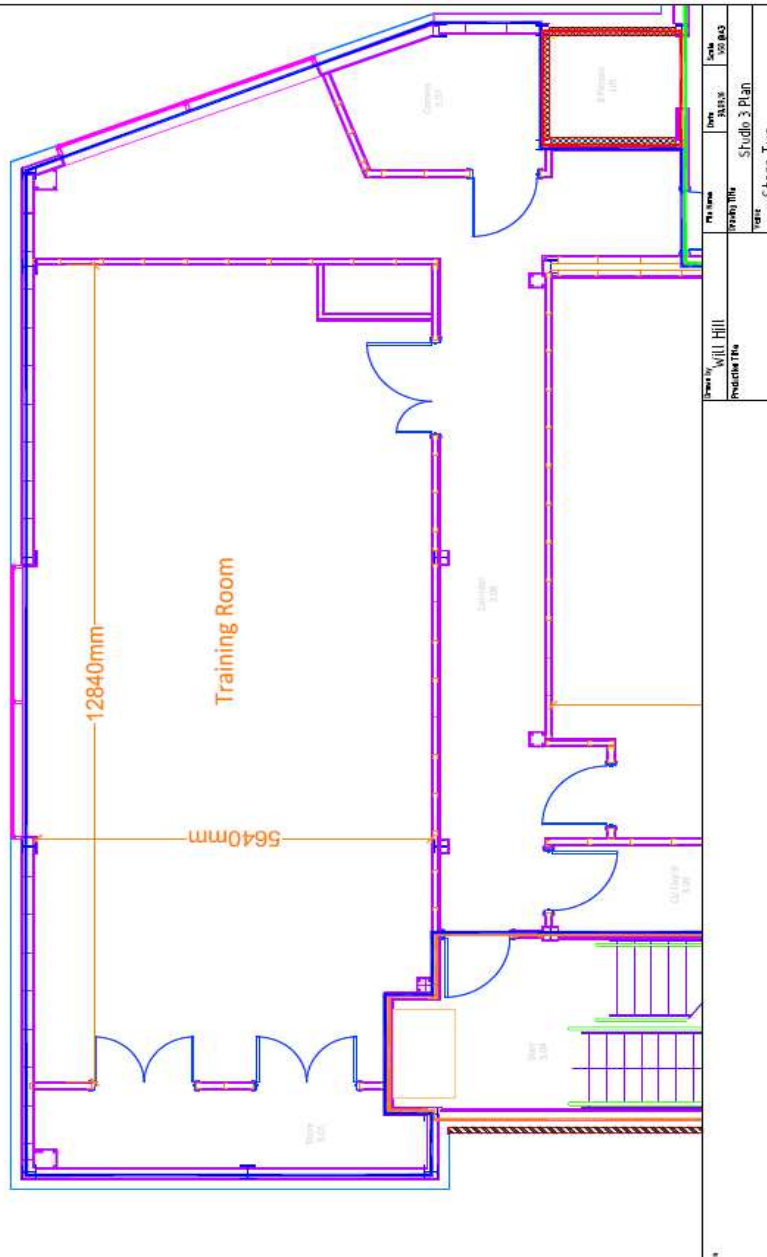
Lighting bars and cable infrastructure with the facility to add lights.

Portable Racks - One flight cased units that can be used in any of the three rooms. They each contain: CD, iphone, 3.5mm jack and Bluetooth inputs with an Alessis MM10 multimix and associated amplifier. These plug to an RCF speaker system. Auditorium and Studio are RCF M801's, Training Room is RCF M601's .

Stand Alone Induction Loop System.

Available by request: Handheld Radio Microphones.

### Studio 3 Plan





# HEALTH AND SAFETY

**Policy:**

The Theatre Royal Health and Safety Policy is available upon request at Stage Door.

**C.D.M:**

Should the staging of your production involve any “Construction” work you will need to fulfill your responsibilities under the Construction Design and Management Regulations 2015.

**Paperwork:**

To satisfy statutory regulations and our license conditions we require information and relevant risk assessments if your production involves any activity that may cause significant risk. This may include but not be limited to; pyrotechnics, firearms, swords, naked flame, water, hazardous substances, personnel flying, special effects, lasers, strobes, animals and children. Should you have identified any “significant risk” you should copy us into any current risk assessments and relevant control measures or method statements.

You should also ensure that you have current certification for any equipment that requires it, i.e. P.A.T., Lifting Gear, Flame Proofing, in case you are requested to produce them either by ourselves or by the licensing authority.

**Smoking on Stage:**

If it is appropriate for the “artistic integrity” of the performance for a performer to smoke during a production then we will require; prior notification, a letter of justification, evidence that you have consulted your employees / voluntary workers and of course appropriate risk assessments that deal with both exposure to smoke and safe use and disposal of naked flame etc.

**Fire Safety:**

All scenery used on stage must be maintained flame retardant. All curtains or drapes should be of a durably or inherently flame retardant fabric and should conform to BS. 5266 Part1: 1988. As a guideline any sheet material less than 18mm (3/4”) thick and timber less than 22mm nominal thickness should be treated to Class 1 (BS. 467 Part 7).

In line with current U.K. Regulations there is no smoking allowed within the building (except as part of a performance – see above).

**Working Areas:**

You are contractually obliged to ensure that no technical work is carried out in any area unless there is proper supervision or permission given by the Resident Manager’s staff and that the touring company work within any relevant guidelines set out in the Resident Manager's safe working procedures and risk assessments.

We reserve the right to roster staff additional to your requirement if we judge that the staffing levels requested do not meet minimum safety requirements for any technical works planned or occurring.