



A Norwich Theatre Production

# JACK AND THE BEANSTALK

The Fee Fi Fo Fun Pantomime

## Visual Story





# Hi, I'm Jill!

I will be your guide to the show **Jack and the Beanstalk**, the relaxed performance and getting around Norwich Theatre Royal.

This booklet is a **Visual Story** with lots of information and images to help you with your visit.

My best friend Jack often gets scared about doing new things, and that is OK. I like to help Jack be brave because we can achieve anything together.

With friends and family around us and knowing what to expect we can have a great time!

So if you don't mind, I will be your friend and you can come and see my friend and hero Jack.

I hope you enjoy the show and have a fantastic time.

Love from,  
**Jill x**

To listen to an audio version of the Visual Story, scan this QR code or visit:  
**[bit.ly/JATBvisualstory](https://bit.ly/JATBvisualstory)**



# Jill's facts about the Relaxed Performance

- A relaxed performance is here to be a **warm and welcoming environment** for all.
- The lights inside the Auditorium will remain on a **low level** during the show.
- Sound levels will be **reduced** to make it more comfortable.
- There is a live band - **they can be loud**.
- Please wear **ear defenders** if you need to.
- If you need to use **a tablet or phone** to enjoy the show, you can use them too.
- Don't worry if you want to move around or **make noise during the show**.
- You can **take a break** at any time.
- There will be a **Chill Out Area** upstairs in the meeting room.
- There will also be **TVs in the Circle Bar and the Foyer**, so if you want to take a break, you won't miss the show.
- There is a restaurant in the building. You might smell the **cooking of food or tea and coffee** around the building.
- There are **automatic hand dryers** in the accessible toilets, and the male and female toilets have paper towels.

# Where is the Performance?

The relaxed performance will take place at **Norwich Theatre Royal** on **Wednesday 4 January** at **5pm**.

The theatre is a place for **telling stories**, using **special lights, sounds, music, actors, singers and dancers**.

Theatre helps people **enjoy wonderful and exciting stories**. You are coming to watch this magical pantomime story of **Jack and the Beanstalk**.



## Did you know?

The place where you will see the panto is called an auditorium. Ours has **1,308 seats**. There won't be that many people today, as our relaxed performances are spaced out.



# About the Venue

Do you find new places scary, like my friend Jack?  
Here is a quick guide about Norwich Theatre Royal to help you get around.

## Box Office

Your tickets will be **emailed to you**, but you can **pick up physical tickets** at the **Box Office Counter**.

You might need to join a queue and wait to pick up tickets. The Box Office **looks like this**.



## The Foyer

The Foyer is **busiest before the show** while everyone waits to go inside the Auditorium.

There is more space upstairs, and if you like, you can wait in the **Chill Out Area** upstairs in the meeting room.



## Merchandise

The **merchandise stand** is in the Foyer where you can buy a **programme** or a **toy cow** to remember the day.



## Signs

There are **signs** for the toilets, lifts, entrances to the Auditorium and exits **all around the building**. They **look like this**.



## Lifts

You can find **lifts and stairs** to the first floor from the Foyer.



## Chill Out Area

The Chill Out Area is in the meeting room upstairs and to your right. The room will have **comfortable** places to **sit and relax**.



## Toilets

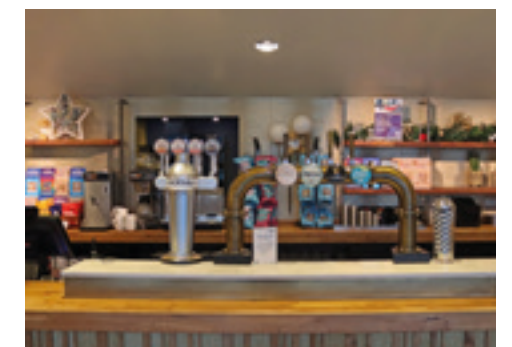
You can find toilets on **all floors**.

There is an **accessible toilet cubicle** in the Foyer, opposite the **Box Office**.



## Drinks and snacks

You can **buy drinks and snacks** upstairs and downstairs at our bars.



## Who Can Help?

You can recognise **Norwich Theatre Royal staff** by their **T-shirts** with the **Norwich Theatre logo** on the front and their **purple lanyards**.

The **Duty Managers** and **Stewards** who check your tickets won't be in uniform, but they will have **name badges**.



## Before the Performance

There will be an announcement over the speakers **15 minutes before the performance starts**.

This announcement will tell you whether the performance has a break in the middle and when the performance is expected to end.

You will also hear about any **special effects** used in the show and will be reminded how long it is until the show begins.

The announcement will be repeated **three times** before the performance.

There will be more announcements in the interval to let you know when the second part is about to begin.

**Remember:** It is OK for you to use your tablets for relaxed performances if you need them to feel comfortable.

## Did you know?

The break in the middle of the performance is called an interval.

## Finding your Seat

On your ticket, you will see whether your seat is in the **Rear stalls, Front Stalls (both downstairs)** or the **Circle (which is upstairs)**.

You can follow the signs from the Foyer or ask one of the **Stewards**.

A **Steward** will be standing by the doors to **check your ticket** and **help you find your seat**.

In the Auditorium, the seat row is found at the **end of the aisle**. The seat number can be found on **each seat**.



## Did you know?

We use **215 lights** in these performances. **177 of them are LED.**



# In the Auditorium

I love being in my seat, waiting for the performance to start. It is so exciting!

While you are waiting, a **live band** will be **playing music**.

When the show is about to start, there will be an announcement to tell you **not to take videos or photos**, and to throw your rubbish in the bins provided and **enjoy the show**.

Then the **music will change**, the **lights will dim** and part one will begin - the lights **won't be switched off** completely.

# The Interval

There will be a **20-minute interval** at the end of part one. This is a chance for you to **go to the toilet, buy ice cream** and for the actors to **rest** before part two.

You can remain in your seat if you want to.

Once everyone is back in their seats, the lights **will dim again** to let us know the performance's second half is about to begin.

# The End

At the **end of part two** the performers will wave goodbye. The **curtain will come down**, and it's the **end of the show** and time to go home.

# In Case of an Evacuation

If we need to **evacuate the building** at any time, an announcement will tell you to leave **by the nearest exit**.

There will be a **siren and flashing red light** at the **rear of the Auditorium**, in the **Circle** and the **Foyers**.

There are **signs to the nearest exits**, and **the stewards will help you find your way out**.

The **assembly point** is at **Chapelfield Gardens bandstand**, and all the staff and volunteers will direct people to **meet there**.

Then, when it's **safe to return**, the staff and volunteers will **direct people back**.

This will only happen in an **emergency**. It is very important to **stay calm, walk calmly to the exits, and not run**.

## Did you know?

Last year Norwich Theatre sold 8,463 number of ice creams during panto season. That's a lot of ice cream!

# Jack and the Beanstalk

## – What to Expect

The next few pages are a massive **spoiler alert** so if you don't want to know about the plot, look away now!

Jack and the Beanstalk takes place in the magical city of Norwich!

The town is threatened by Giant Bonecrunch and tells the story of our hero Jack, who climbs the beanstalk to defeat the Giant for the whole of Norwich.

Expect lots of **songs, dancing, comedy and magic** along the way.

The show is approximately **2 hours long**, with a **20-minute interval** in the middle.



There are **eight** junior cast members and **they work in pairs**, so the two you see on stage **might not** be the ones shown in this guide.

During the show, you will be asked to **shout things out** like **"oh no, he won't"** and **"It's behind you"** and get involved during the show. You don't have to join in if you don't want to.

The audience might **boo** the baddie to let him know he is mean! He knows this is part of the show and it won't upset him.

In the pantomime there is a dame - this year it is Dame Trott. This means the actor is a man dressed up using special make up and clothes.

Jack and the Beanstalk has a **bright and colourful set** to transport you to the magical worlds you will see.



### Did you know?

Our Dame has been in a Norwich Theatre Pantomime every year for **22 years!**



# The Characters

## Jack

What shall I say about my best friend, Jack? Jack is a typical Norfolk boy.

Unfortunately, things always go wrong for him. He is a great friend, and he wants to do good for his friends and family.

When the challenge of the Giant comes along, he climbs up the beanstalk to defeat the Giant.

Jack's best friends are Stevie the Ukulele, Me (Princess Jill), Pat the Cow and Bill and Beau.

He is the hero of our story.



## King Nigel of Norwich

My dad, King Nigel of Norwich, is a jolly man who wants to do the best for Norwich. But, things don't always go according to plan.

He is scared of the Giant and pays all the taxes, so the Giant doesn't do bad things to Norwich.

He loves his kingdom and he also is secretly in love with Dame Trott.

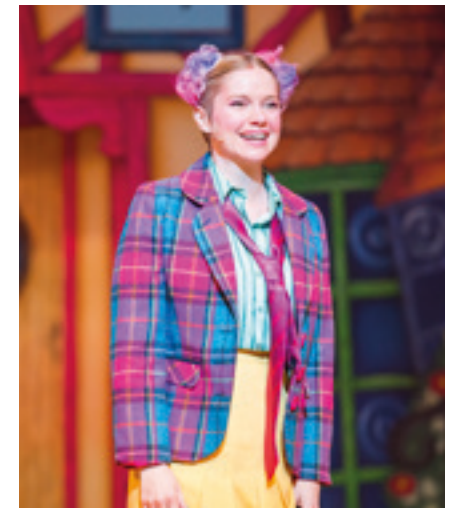


## Princess Jill

Oh, that's me! I am a young fighter, and I do not like mean people.

I like to see things right for the people of Norwich. I care a lot for others and like to do good for everyone.

But I am not afraid to say what I think. I like to think I am fearless.



## Pat the Cow

Pat the Cow is the coolest and most funky cow that there has ever been in Norwich. She is a cow who loves a turnip.



## Dame Trott

Trotty is a hard-working mum who has been running a dairy factory for a long time.

She is trying to make as much money as possible to have a good life.





## Nightshade

Nightshade is the baddie and is super greedy and likes having a lot of things.

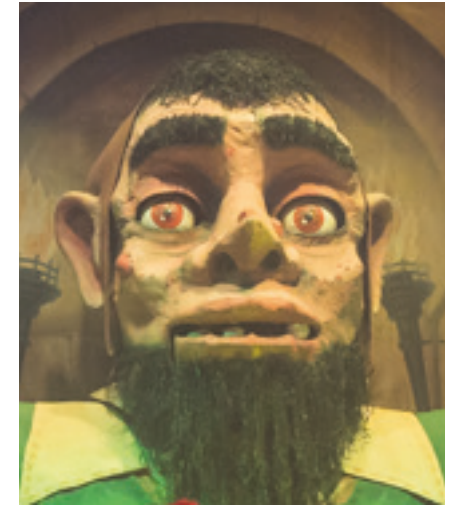
On top of that, he loves himself. Any tempting thing that comes along, he takes.

Nightshade tempts Bill and Beau to join him.



## Giant Bonecrunch

The Giant is an evil thing that lives above Norwich and he is bad to the bone.



## Fairy Fullobears

Fairy Fullobears is FULL OF BEANS!

She watches what is going on in Norwich and wants to defeat Nightshade and the Giant.

She also wants to help Jack gain his confidence, and see him reach his full potential.



## Bill and Beau

Bill and Beau are two lovely kids who live life very happily in Norwich. But they are very scared about life and the future.

The baddie Nightshade tempts them to join him. This is when they transform into Biff and Boff, the sidekicks of Nightshade.



## Fairy Fullopeas

Fairy Fullopeas is the identical twin sister of Fairy Fullobears. The Giant stole her to work in the kitchens of his castle, cooking for the Giant is a huge job.



## Citizens of Norwich

The people playing the Citizens of Norwich are called the ensemble. They dance and sing and sometimes play other characters.





# The Chill Out Area

Sponsored by Orchard Toys

Thank you for reading this Visual Story for Jack and the Beanstalk's Relaxed Performance at Norwich Theatre Royal.

I hope you enjoy the show and have a magical experience!

Happy New Year, and I hope to see you very soon.

The **chill out area** is a great place to come and relax **before**, **during** and **after** the relaxed performance.

It will be a **quiet area** with comfy places to **sit and relax**.

There will be **toys** in the chill out area for you to **play** with.  
Here are some of the toys on offer:



We want to say a big thank you to **Orchard Toys** for sponsoring the Chill Out Area and providing all the great toys for you to play with.







Charity No. 262259