

Norwich Theatre Stage Two

Technical Specifications

Updated 27.02.20



Stage Two
Norwich Theatre Royal
Theatre Street
Norwich,
Norfolk.
NR2 1RL.

t. 01603 598500
f. 01603 598501

www.norwichtheatre.org

Contents

Contacts	Technical Staff, Other Contacts
General Information	Building/Auditorium, How to find us, Deliveries, Parking.
Auditorium	Access, General, Floor, Dimensions, Lifting Equipment, Soft Goods, Projection Screen, Pipe Grid and Track, Access Equipment, Rostra, Dressing Rooms, Accessibility Aids.
Lighting	Lighting Desk, Racks, D.M.X., Ethernet, Lighting Equipment.
Sound	Desk, Playback, FOH Speakers, Monitor Speakers, Audio Tie Lines, Speaker Tie Lines, Cable Mics, Comms, Portable Racks.
Video	Video Tie Lines, Projector.
Health and Safety	Policy, C.D.M, Paperwork, Smoking on Stage, Fire Safety, Working Areas
Plans	Ground Plan, Section, Pipe Grid Plan.

Contacts

Technical support is provided either via the Theatre Royal Learning and Participation Department which is based in Stage Two or via the Theatre Royal Technical Department.

Technical Staff

Theatre Royal Technical & Buildings Director	Will Hill will.hill@norwichtheatre.org	01603 598550
Theatre Royal Lighting & Sound Manager	Ian Greeves ian.greeves@norwichtheatre.org	01603 598560
General Queries	S2.technical@norwichtheatre.org	

Other Contacts

Learning and Participation Director	Wendy Ellis wendy.ellis@norwichtheatre.org	01603 598610
Production Officer	Rachel Lloyd rachel.lloyd@norwichtheatre.org	01603 598611
Stage Two Reception		01603 598600
Theatre Royal Stage Door	stagedoor@norwichtheatre.org	01603 598500

General Information

Building / Auditorium

The Stage Two building was opened in the Summer of 2016.

Stage Two is a purpose built; “learning and skills centre” geared to the performing arts. It consists of a 120 seat studio theatre, studio/rehearsal room, training room and workshop.

Auditorium



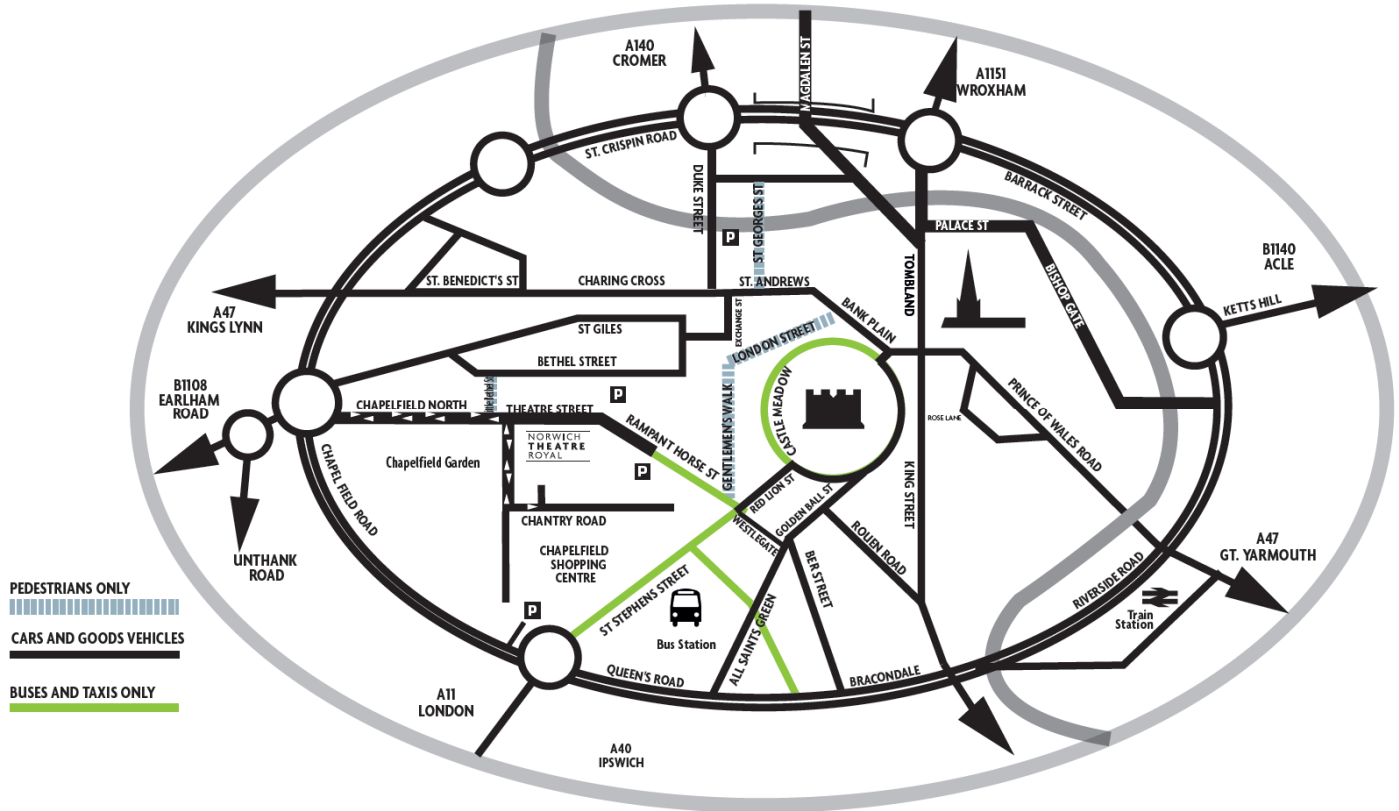
Studio



Training Room



How to find us . . .



Directions: From the Chapel Field roundabout take Chapel Field North along the side of Chapel Field Park. At the end of the park turn right onto Chapel Field East and then first left onto Chantry Road.

Passenger Vehicles: Limited parking spaces may be available on our side and rear car parks by arrangement via your Company or Tour Manager with our Stage Door Keeper or Technical Director. There are also numerous pay and display Car Parks nearby.

Delivery Vehicles Scenic deliveries are via the main entrance doors or by arrangement via the rear entrance (closer to auditorium but involves three steps).

AUDITORIUM

Access	Off road parking at street level. Main entrance to building is via double doors opposite Theatre Royal Stage Door. The Auditorium is located directly off the main reception area through a pair of double doors. Access is flat. Alternative access is possible via rear auditorium door.		
General	The room has usable floor space approx. 13.2m long and 8.8m wide. It is well equipped with a lighting, sound and drapes package as detailed below.		
Floor	The floor is flat and consists of a sprung Junckers 22mm Beech surface coloured "Dark Coco". By agreement the floor can be taped on/screwed into.		
Dimensions	Back Wall to Stored Bleachers	=	13.26m
	Room Width	=	8.82m
	Grid Height	=	6.02m
	Hoist Flying Height	=	6.10m
	Main Entrance Doors	=	1.02m w x 2.03m h
Lifting Equipment	2 x single speed 4 line Electric hoists. 250kgs SWL. Operated from a pendant controller plugging in Mid Stage Left.		
	Bar Length	=	7000mm
	Bar O.D.	=	48mm
	Bar I.D.	=	36mm
	Lifting Capacity	=	250Kgs (UDL)
	Lift Speed	=	6m/minute
Soft Goods	There are two sets of black serge Half Tabs; Pair One are each 4.5m width and 5.78m drop, Pair Two are each 4m width x 5.78m drop. Pair One can be used as an upstage black backing, Pair Two can be used as a set of wipeable tabs for an end on setting. There are eight black serge legs at 1.2m width and 5.78m drop that can rig on the perimeter Triple E Unicyc track. There is a White filled cloth at 6.8m width and 5.75m drop that can be used as an upstage cyc.		
Projection Screen	There is a motorized retractable Screen International Cine Pro matt white projection screen at 7m width and 5.75m drop. This is permanently mounted 400mm downstage of the crossover corridor wall. Usable as a cyc also.		
Pipe Grid and Track	There is a pipe grid throughout the room consisting of seven bars along the length of the room, five of which are IWB's wired for sound and AV, and six bars across the width of the room which are IWB's wired for mains and data.		
	There is a track system of Triple E unicyc that runs around the perimeter of the room with a points system to access a midstage track. There are two Triple E Unitrack tab tracks rigged as single tracks with overlap arms. One is 8m width and can be used on either of the two motorised hoists, the other is 7m width and can be rigged to be used for wipeable tabs in an endstage setting.		
Access Eqpt.	1 x Genie GR15 runabout MEWP. One set of Zarges Industrial 3-part Skymaster 10 rung extendable ladders. One Zarges 6 tread platform step		
Rostra	20 sheets of 2m x 1m Metrodeck and various height legs (280mm, 350mm, 530mm, 710mm).		

Dressing Rooms

Floor	Name	Capacity	WC	Shower	Phone 01603	Fridge	TV	Wi-Fi
First Floor	Dressing Room 1	6	Adjacent	Adjacent	x	x	x	✓
	Dressing Room 2	6	Adjacent	Adjacent	x	x	x	✓

Most back stage areas have free WiFi coverage on: stagetwoquest.

The TV system carries a full digital system, and the Stage picture.

Accessibility Aids

The Auditorium has an induction loop throughout and a radio assisted listening system. The Studio and Training Room both have induction loop systems. Caption screens are available by arrangement with the Theatre Royal Technical Department.

LIGHTING

Lighting Desk

ETC Element 40 - 500 Channels

Racks

01 x ETC Sensor Rack 72 Ways of 15A Thru-power Dim/non-dim ETR15AFR modules

D.M.X.

Large network of tie lines spread around the Theatre space

Ethernet

Tie lines spread around the Theatre space

Power

There is a single phase 32amp cee Form supply located in the Control Room. This is on a 30ma RCD.

Lighting Equipment

No.	Type	Notes
4	ETC Colorsourc Profiles	with 26° Lens Tubes
6	ETC Colorsourc Profiles	with 36° Lens Tubes
12	ETC Colorsourc Pars	
6	Arri C-7 LED Fresnels	
2	Chroma Q Color Force 72 Mrk 1 battens	
2	Chroma Q Color Force 48 Mrk 1 battens	

SOUND

Desk Yamaha TF3 in the Control Room.

Playback The Control Room has a Tascam CD Player, 1x Mac Mini running QLab Pro Sound

FOH Speakers

No.	Type	Notes
2	D&b 10s	All d&b speakers have 10D power amplifiers.

Monitor Speakers

No.	Type	Notes
2	10" Maxx	

Audio Tie Lines

Distributed throughout the auditorium patched via a GPO patch bay in the Dimmer Room.

Speaker Tie Lines

Distributed throughout the auditorium patched via a NL4 patch bay in the Dimmer Room.

Cable Mics

Make	Type
Shure	4 x SM58
Crown	2 x pcc 160

Comms.

Paging system to Dressing Rooms from Control Room. Paging to FOH from FOH reception and Control Room. Stage intercom to all positions, provided by a 2 channel Clear-Com system 4 x sets

Portable Racks

Two flight cased units that can be used in any of the three rooms. They each contain: CD, iphone, 3.5mm jack and Bluetooth inputs with an Alessis MM10 multimix and associated amplifier. These plug to an RCF speaker system. Auditorium and Studio are RCF M801's, Training Room is RCF M601's .

VIDEO

Video Tie Lines

10 x Available throughout the auditorium, 2 in the Studio and 2 in the Training Room. All linked to a BNC patch in the Dimmer room

Projector

Panasonic PTDW830EK (8300 Lumen). Control room inputs are HDMI and VGA. Auditorium input is HDMI and VGA via HD Base T

HEALTH and SAFETY

Policy:

The Theatre Royal Health and Safety Policy is available upon request at Stage Door.

C.D.M:

Should the staging of your production involve any “Construction” work you will need to fulfill your responsibilities under the Construction Design and Management Regulations 2015.

Paperwork:

To satisfy statutory regulations and our license conditions we require information and relevant risk assessments if your production involves any activity that may cause significant risk. This may include but not be limited to; pyrotechnics, firearms, swords, naked flame, water, hazardous substances, personnel flying, special effects, lasers, strobes, animals and children. Should you have identified any “significant risk” you should copy us into any current risk assessments and relevant control measures or method statements.

You should also ensure that you have current certification for any equipment that requires it, i.e. P.A.T., Lifting Gear, Flame Proofing, in case you are requested to produce them either by ourselves or by the licensing authority.

Smoking on Stage:

If it is appropriate for the “artistic integrity” of the performance for a performer to smoke during a production then we will require; prior notification, a letter of justification, evidence that you have consulted your employees / voluntary workers and of course appropriate risk assessments that deal with both exposure to smoke and safe use and disposal of naked flame etc.

Fire Safety:

All scenery used on stage must be maintained flame retardant. All curtains or drapes should be of a durably or inherently flame retardant fabric and should conform to BS. 5266 Part1: 1988. As a guideline any sheet material less than 18mm (3/4”) thick and timber less than 22mm nominal thickness should be treated to Class 1 (BS. 467 Part 7).

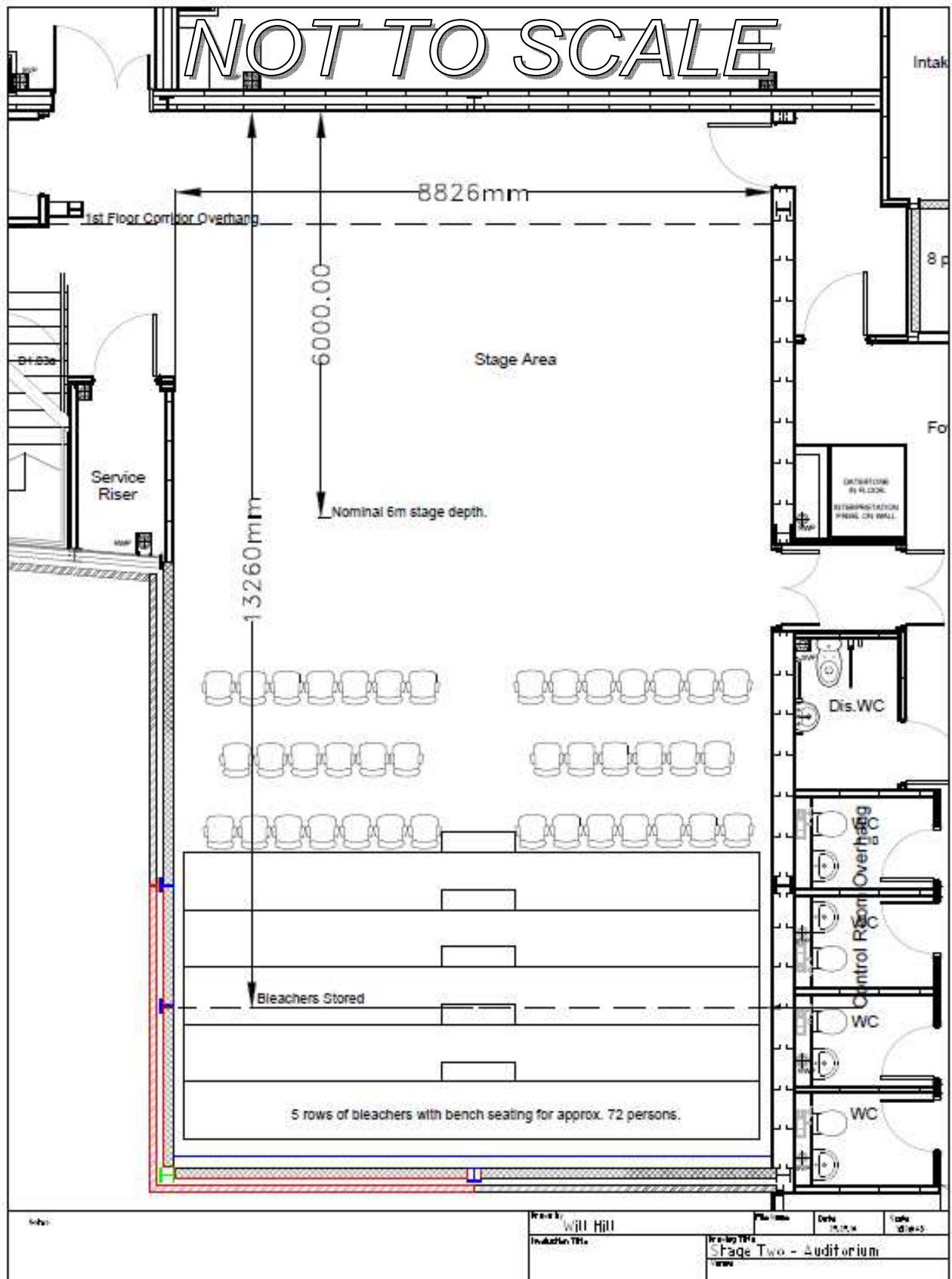
In line with current U.K. Regulations there is no smoking allowed within the building (except as part of a performance – see above).

Working Areas:

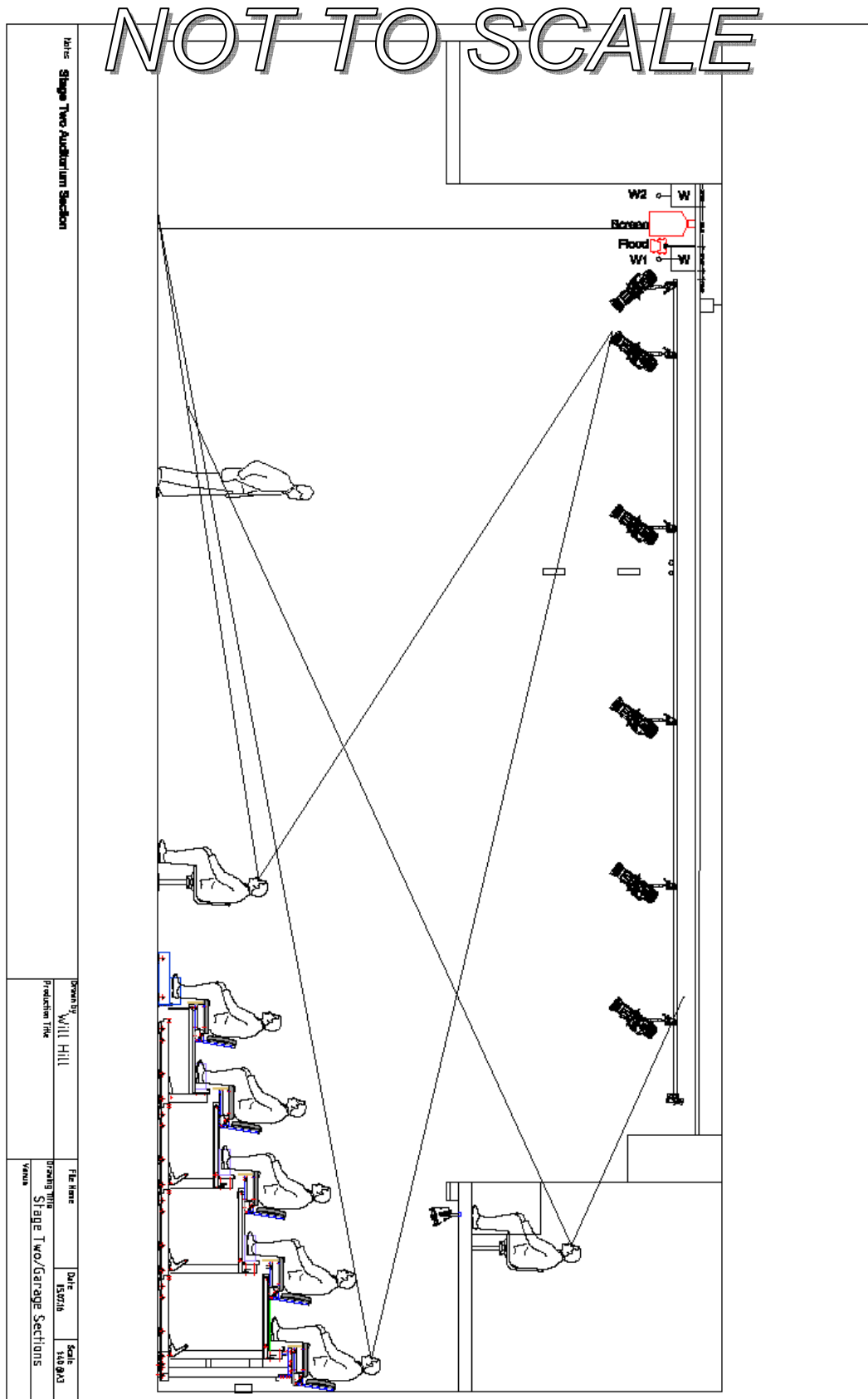
You are contractually obliged to ensure that no technical work is carried out in any area unless there is proper supervision or permission given by the Resident Manager’s staff and that the touring company work within any relevant guidelines set out in the Resident Manager's safe working procedures and risk assessments.

We reserve the right to roster staff additional to your requirement if we judge that the staffing levels requested do not meet minimum safety requirements for any technical works planned or occurring.

Plans



Section



Pipe Grid Plan

