

FRONT OF THE STAGE IS HERE

CL

THEATRE ROYAL NORWICH
THEATRE ST
NORWICH NR2 1RL
01603 598500

HOUSE LIGHT DIMMERS 229 > 245
NON-DIM CIRCUITS 401 > 495

LIGHTING BRIDGE DIMMERS 1>20
20 x 750w S4 26° (with top hats) ND 401,402 & 488
(1.2 & 19.20 work best when crossed)

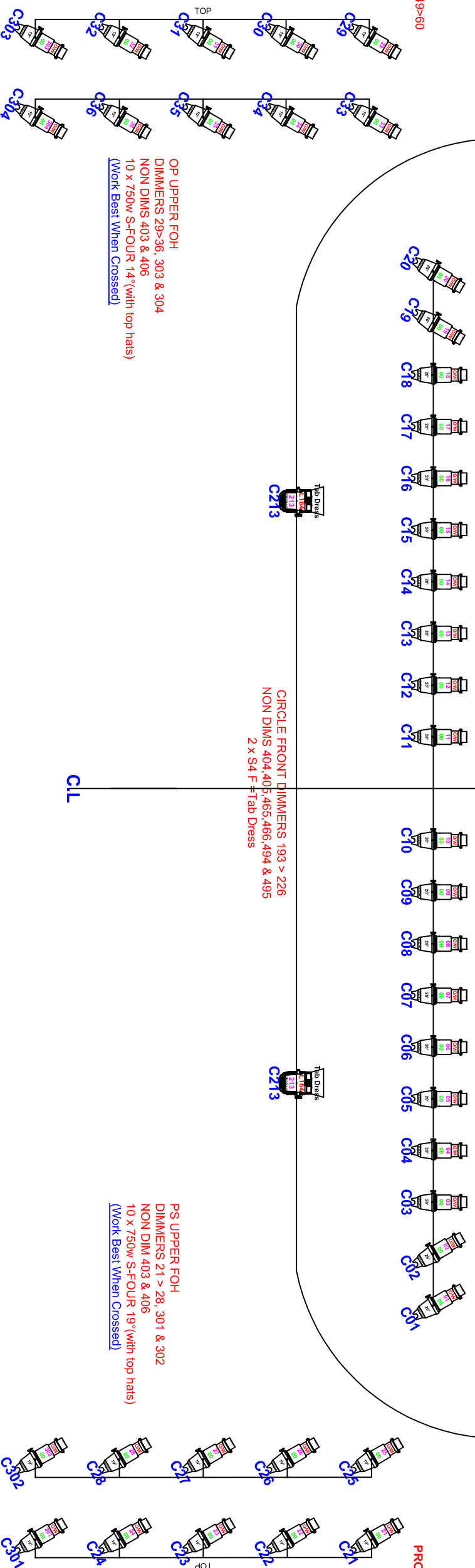
PROS BOOM DIMMERS 49>60
NON DIMS 408,488

PROS BOOM DIMMERS 37> 48
NON DIMS 407,487

CIRCLE FRONT DIMMERS 193 > 226
NON DIMS 404,405,465,466,494 & 495
2 x S4 F=Tab Dress

OP UPPER FOH
DIMMERS 29>36, 303 & 304
NON DIMS 403 & 406
10 x 750w S-F-FOUR 14° (with top hats)
(Work Best When Crossed)

PS UPPER FOH
DIMMERS 21 > 28, 301 & 302
NON DIM 403 & 406
10 x 750w S-F-FOUR 19° (with top hats)
(Work Best When Crossed)



Notes

Drawn by **Ian Greeves**

File Name

Date **27.01.16**

Scale **Not to Scale**

FOH LX Plan

Venue

Theatre Royal Norwich